

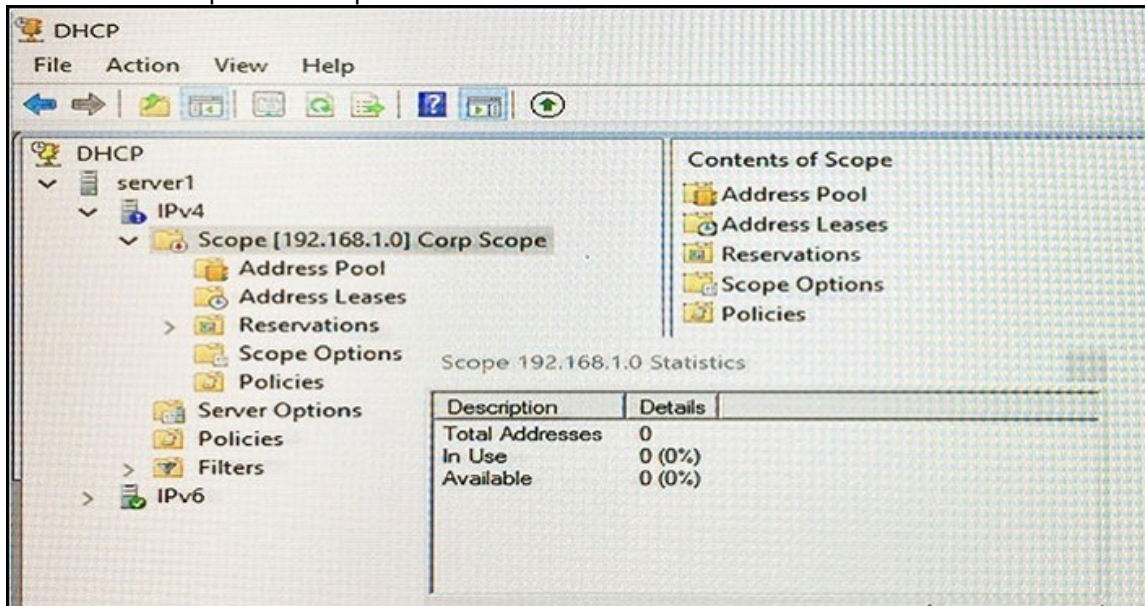
- **Vendor: Microsoft**
- **Exam Code: 70-741**
- **Exam Name: Networking with Windows Server 2016**
- **Question 1 – Question 10**

[Visit PassLeader and Download Full Version 70-741 Exam Dumps](#)

QUESTION 1

Note: This question is part of a series of questions that present the same scenario. Each question in the series contains a unique solution that might meet the stated goals. Some question sets might have more than one correct solution, while others might not have a correct solution. After you answer a question in this sections, you will NOT be able to return to it. As a result, these questions will not appear in the review screen.

You network contains an Active Directory domain named contoso.com. The domain contains a DHCP server named Server1. All client computers run Windows 10 and are configured as DHCP clients. Your helpdesk received calls today from users who failed to access the network from their Windows 10 computer. You open the DHCP console as shown in the exhibit.



You need to ensure that all of the Windows 10 computers can receive a DHCP lease.

Solution: You activate the scope.

Does this meet the goal?

A. Yes

B. No

Answer: A

Explanation:

[https://technet.microsoft.com/en-us/library/dd183581\(v=ws.10\).aspx](https://technet.microsoft.com/en-us/library/dd183581(v=ws.10).aspx)

QUESTION 2

Note: This question is part of a series of questions that present the same scenario. Each question in the series contains a unique solution that might meet the stated goals.

Your network contains an Active Directory domain named contoso.com. The domain contains a DNS server named Server1. All client computers run Windows 10. On Server1, you have the following zone configuration.

ZoneName	ZoneType	IsAutoCreated	IsDsIntegrated	IsReverseLookupZone	IsSigned
-----	-----	-----	-----	-----	-----
_msdcs.contoso.com	Primary	False	True	False	False
adatum.com	Forwarder	False	False	False	False
contoso.com	Primary	False	True	False	False
fabrikam.com	Primary	False	False	False	True
TrustAnchors	Primary	False	True	False	False

You have the following subnets defined on Server1.

Name	IPv4Subnet	IPv6Subnet
----	-----	-----
Subnet1	{10.0.0.0/24}	
Subnet2	{10.0.1.0/24}	
Subnet3	{192.168.15.0/24}	
Subnet4	{172.16.1.0/24}	

You need to prevent Server1 from resolving queries from DNS clients located on Subnet4. Server1 must resolve queries from all other DNS clients.

Solution: From Windows Firewall with Advanced Security on Server1, you create an inbound rule. Does this meet the goal?

A. Yes

B. No

Answer: B

Explanation:

[https://technet.microsoft.com/en-us/library/dd421709\(v=ws.10\).aspx](https://technet.microsoft.com/en-us/library/dd421709(v=ws.10).aspx)

QUESTION 3

Note: This question is part of a series of questions that present the same scenario. Each question in the series contains a unique solution that might meet the stated goals. Some question sets might have more than one correct solution, while others might not have a correct solution. After you answer a question in this sections, you will NOT be able to return to it. As a result, these questions will not appear in the review screen.

Your network contains an Active Directory domain named contoso.com. The domain contains a member server named Server1 that runs Windows Server 2016 and has the DNS Server role installed. Automatic scavenging of stale records is enabled and the scavenging period is set to 10 days. All client computers dynamically register their names in the contoso.com DNS zone on Server1. You discover that the names of multiple client computers that were removed from the network several weeks ago can still be resolved. You need to configure Server1 to automatically remove the records of the client computers that have been offline for more than 10 days.

Solution: You run the dnscmd.exe command and specify the /AgeAllRecords parameter for the zone.

Does this meet the goal?

- A. Yes
- B. No

Answer: B

Explanation:

[https://technet.microsoft.com/en-us/library/cc772069\(v=ws.11\).aspx](https://technet.microsoft.com/en-us/library/cc772069(v=ws.11).aspx)

QUESTION 4

Note: This question is part of a series of questions that use the same or similar answer choices. An answer choice may be correct for more than one question in the series. Each question is independent of the other questions in this series. Information and details provided in a question apply only to that question.

You have a DHCP server named Server1 that has three network cards. Each network card is configured to use a static IP address. Each network card connects to a different network segment. Server1 has an IPv4 scope named Scope1. You need to ensure that Server1 only uses one network card when leasing IP addresses in Scope1. What should you do?

- A. From the properties of Scope1, modify the Conflict detection attempts setting.
- B. From the properties of Scope1, configure Name Protection.
- C. From the properties of IPv4, configure the bindings.
- D. From IPv4, create a new filter.
- E. From the properties of Scope1, create an exclusion range.
- F. From IPv4, run the DHCP Policy Configuration Wizard.
- G. From Control Panel, modify the properties of Ethernet.
- H. From Scope1, create a reservation.

Answer: C

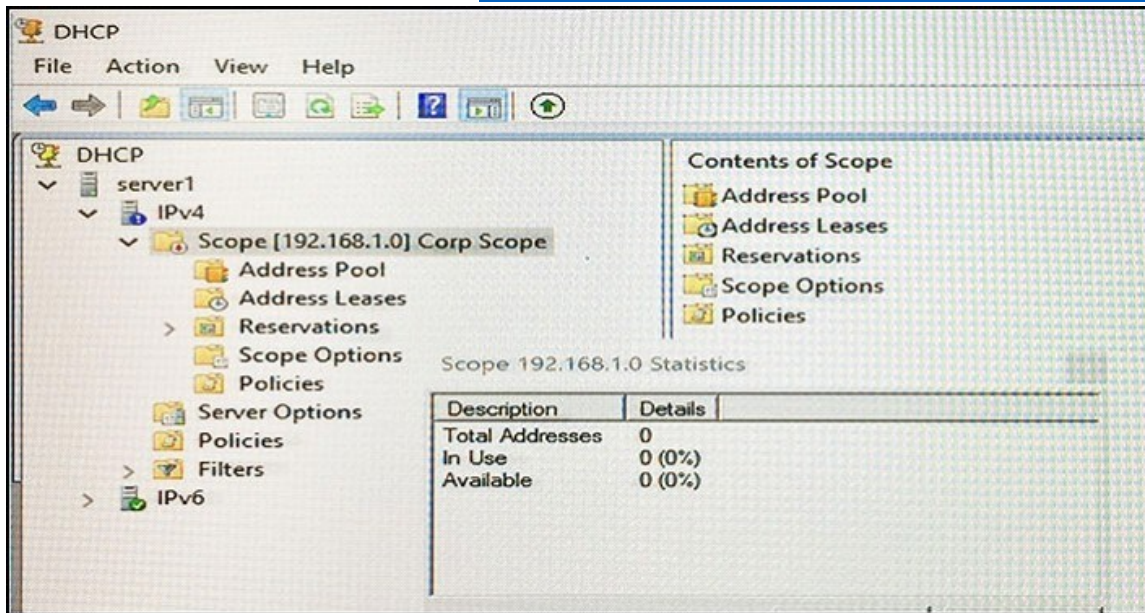
Explanation:

[https://technet.microsoft.com/en-us/library/cc770650\(v=ws.11\).aspx](https://technet.microsoft.com/en-us/library/cc770650(v=ws.11).aspx)

QUESTION 5

Note: This question is part of a series of questions that present the same scenario. Each question in the series contains a unique solution that might meet the stated goals. Some question sets might have more than one correct solution, while others might not have a correct solution. After you answer a question in this sections, you will NOT be able to return to it. As a result, these questions will not appear in the review screen.

Your network contains an Active Directory domain named contoso.com. The domain contains a DHCP server named Server1. All client computers run Windows 10 and are configured as DHCP clients. Your helpdesk received calls today from users who failed to access the network from their Windows 10 computer. You open the DHCP console as shown in the exhibit.



You need to ensure that all of the Windows 10 computers can receive a DHCP lease.
Solution: You start the DHCP Server service.
Does this meet the goal?

- A. Yes
- B. No

Answer: B

Explanation:

[https://technet.microsoft.com/en-us/library/dd183581\(v=ws.10\).aspx](https://technet.microsoft.com/en-us/library/dd183581(v=ws.10).aspx)

QUESTION 6

Your network contains an Active Directory forest named contoso.com. The forest contains two domains named contoso.com and litwareinc.com. Your company recently deployed DirectAccess for the members of a group named DA_Computers. All client computers are members of DA_Computers. You discover that DirectAccess clients can access the resources located in the contoso.com domain only. The clients can access the resources in the litwareinc.com domain by using an L2TP VPN connection to the network. You need to ensure that the DirectAccess clients can access the resources in the litwareinc.com domain. What should you do?

- A. From a Group Policy object (GPO), modify the Name Resolution Policy Table (NRPT).
- B. From the properties of the servers in litwareinc.com, configure the delegation settings.
- C. On an external DNS server, create a zone delegation for litwareinc.com.
- D. Add the servers in litwareinc.com to the RAS and IAS Servers group.

Answer: A

Explanation:

<https://blogs.technet.microsoft.com/tomshinder/2010/04/01/directaccess-client-location-awareness-nrpt-name-resolution/>

QUESTION 7

Your company has two main offices. The offices are located in London and Seattle. All servers run Windows Server 2016. In the Seattle office, you have a Distributed File System (DFS) server named FS1. FS1 has a folder named Folder1 that contains large Windows image files. In the London office,

you deploy a DFS server named FS2, and you then replicate Folder1 to FS2. After several days, you discover that the replication of certain files failed to complete. You need to ensure that all of the files in Folder1 can replicate to FS2. What should you do?

- A. Modify the disk quota of the drive that contains Folder1.
- B. From a command prompt, run `dfsutil /purgemupcache`.
- C. Create a quota for Folder1 by using File Server Resource Manager (FSRM).
- D. Modify the size of staging area of Folder1.

Answer: C

Explanation:

[https://technet.microsoft.com/en-us/library/hh831487\(v=ws.11\).aspx](https://technet.microsoft.com/en-us/library/hh831487(v=ws.11).aspx)

QUESTION 8

Your network contains multiple wireless access points (WAPs) that use WPA2-Personal authentication. The network contains an enterprise root certification authority (CA). The security administrator at your company plans to implement WPA2-Enterprise authentication on the WAPs. To support the authentication change, you deploy a server that has Network Policy Server (NPS) installed. You need to configure NPS to authenticate the wireless clients. What should you do on the NPS server?

- A. Add RADIUS clients and configure network policies.
- B. Create a remote RADIUS server group and configure connection request policies.
- C. Create a remote RADIUS server group and install a server certificate.
- D. Add RADIUS clients and configure connection request policies.

Answer: A

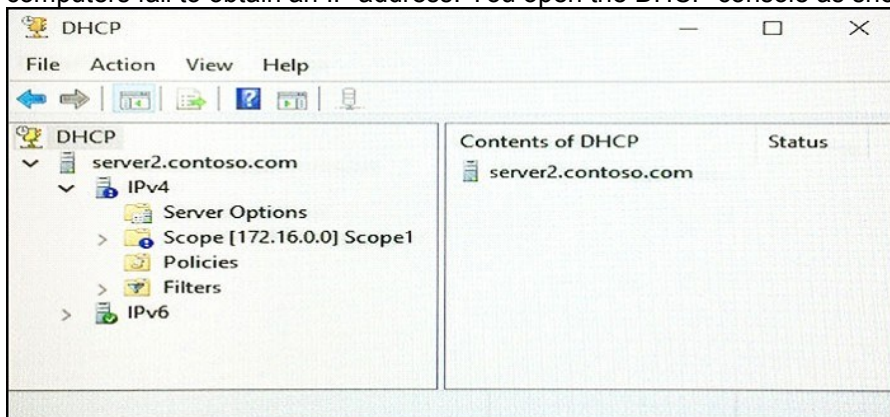
Explanation:

<https://ittrainingday.com/2013/12/25/how-to-configure-a-windows-radius-server-for-802-1x-wireless-or-wired-connections/>

QUESTION 9

Note: This question is part of a series of questions that present the same scenario. Each question in the series contains a unique solution that might meet the stated goals. Some question sets might have more than one correct solution, while others might not have a correct solution. After you answer a question in this sections, you will NOT be able to return to it. As a result, these questions will not appear in the review screen.

You network contains an Active Directory domain named contoso.com. The domain contains a DHCP server named Server2 than runs Windows Server 2016. Users report that their client computers fail to obtain an IP address. You open the DHCP console as shown in the Exhibit.



Scope1 has an address range of 172.16.0.10 to 172.16.0.100 and a prefix length of 23 bits. You need to ensure that all of the client computers on the network can obtain an IP address from Server2.

Solution: You run the Set-DhcpServerv4Scope cmdlet.

Does this meet the goal?

- A. Yes
- B. No

Answer: A

Explanation:

<https://technet.microsoft.com/itpro/powershell/windows/dhcp-server/set-dhcpserverv4scope>

QUESTION 10

Note: This question is part of a series of questions that present the same scenario. Each question in the series contains a unique solution that might meet the stated goals. Some question sets might have more than one correct solution, while others might not have a correct solution. After you answer a question in this sections, you will NOT be able to return to it. As a result, these questions will not appear in the review screen.

You network contains an Active Directory domain named contoso.com. The domain contains a member server named Server1 that runs Windows Server 2016 and has the DNS Server role installed. Automatic scavenging of state records is enabled and the scavenging period is set to 10 days. All client computers dynamically register their names in the contoso.com DNS zone on Server1. You discover that the names of multiple client computers that were removed from the network several weeks ago can still be resolved. You need to configure Server1 to automatically remove the records of the client computers that have been offline for more than 10 days.

Solution: You modify the Zone Aging/Scavenging properties of the zone.

Does this meet the goal?

- A. Yes
- B. No

Answer: A

Explanation:

[https://technet.microsoft.com/en-us/library/cc771362\(v=ws.10\).aspx](https://technet.microsoft.com/en-us/library/cc771362(v=ws.10).aspx)

[Visit PassLeader and Download Full Version 70-741 Exam Dumps](#)