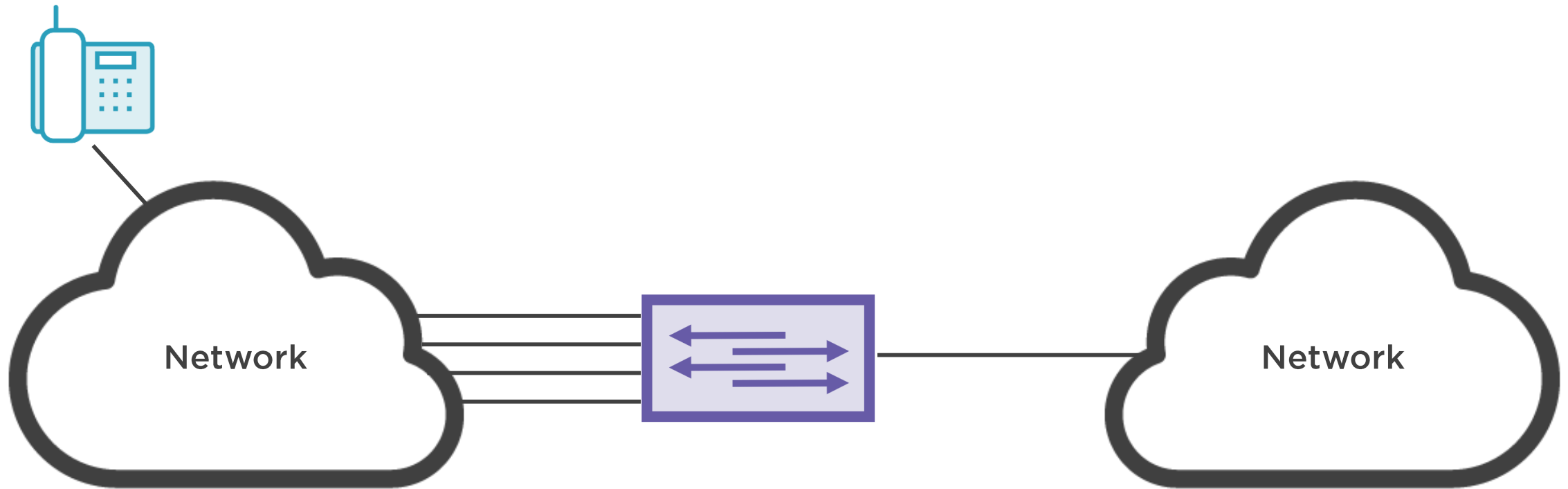


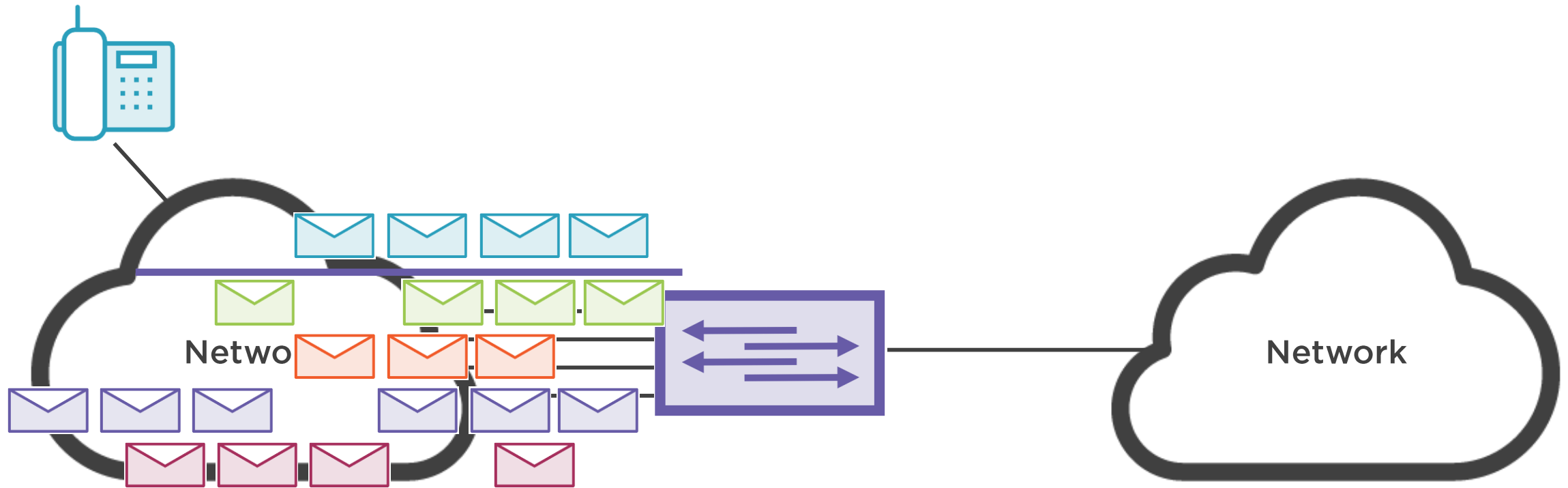
Giving VoIP a Priority Queue



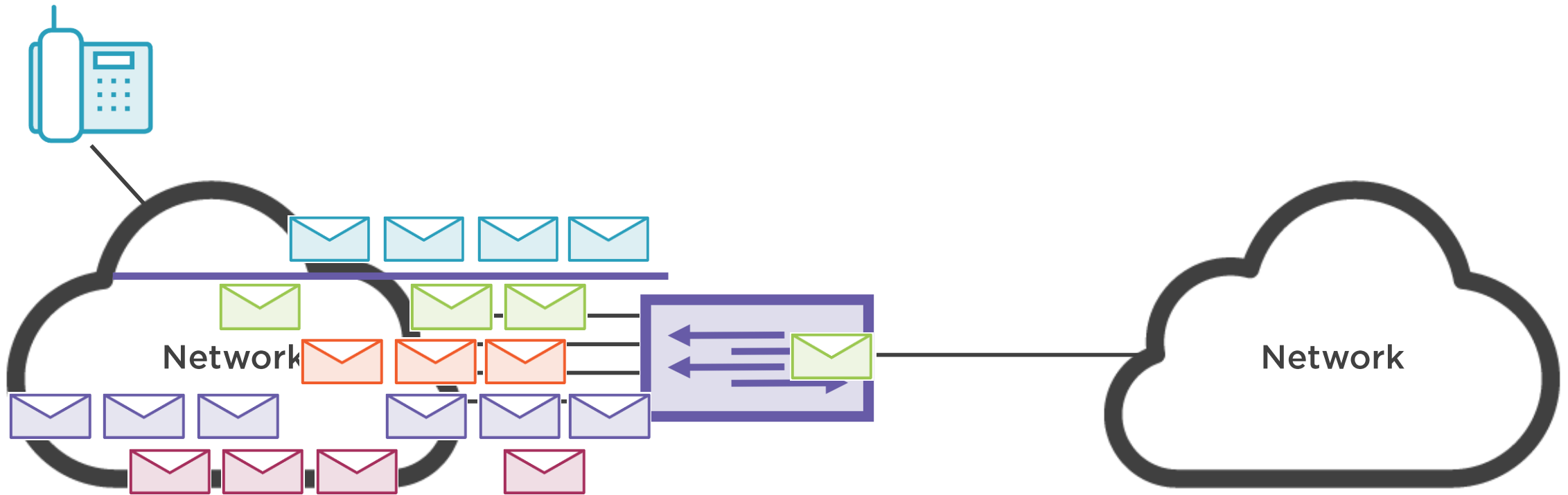
Network Traffic with VoIP



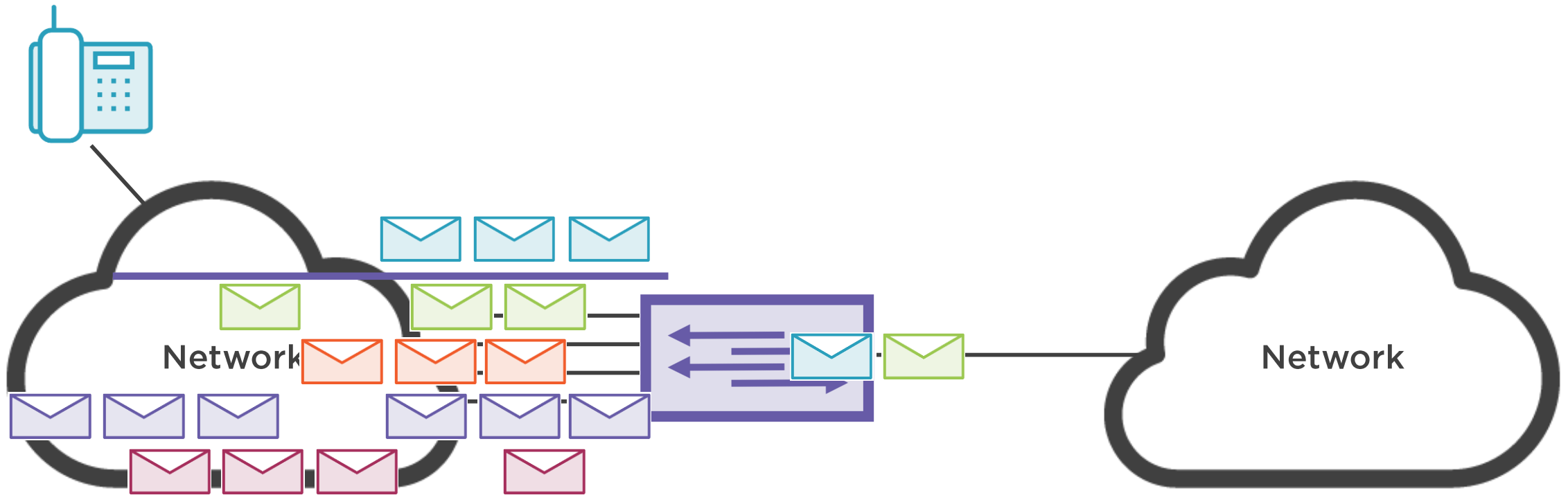
Network Traffic with VoIP



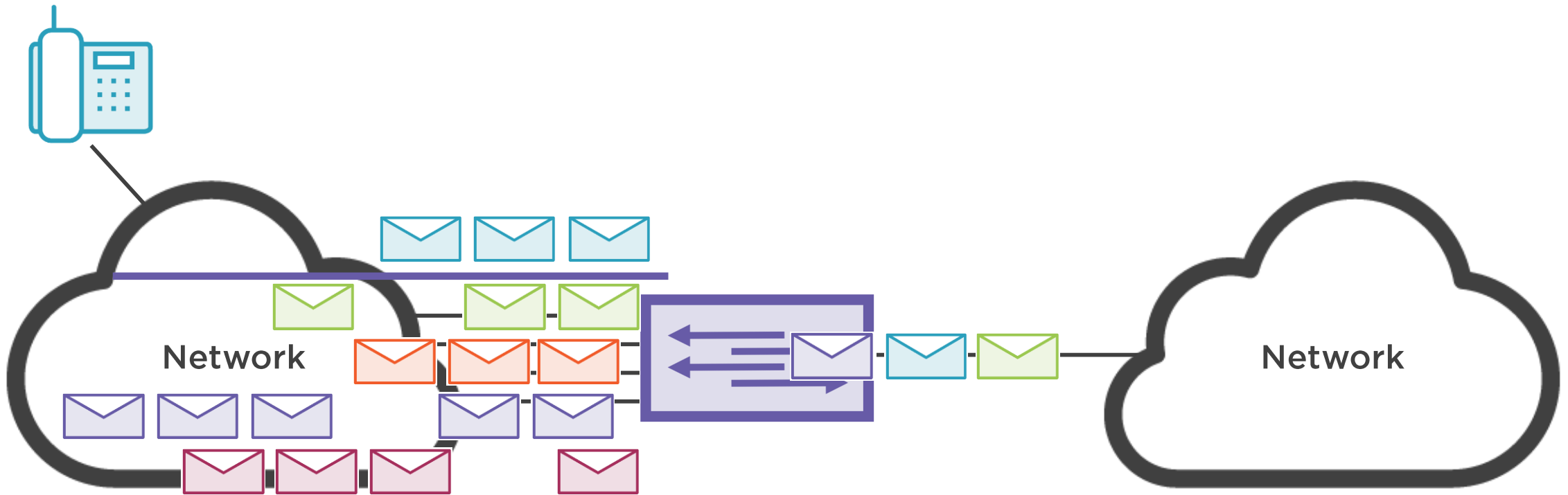
Network Traffic with VoIP



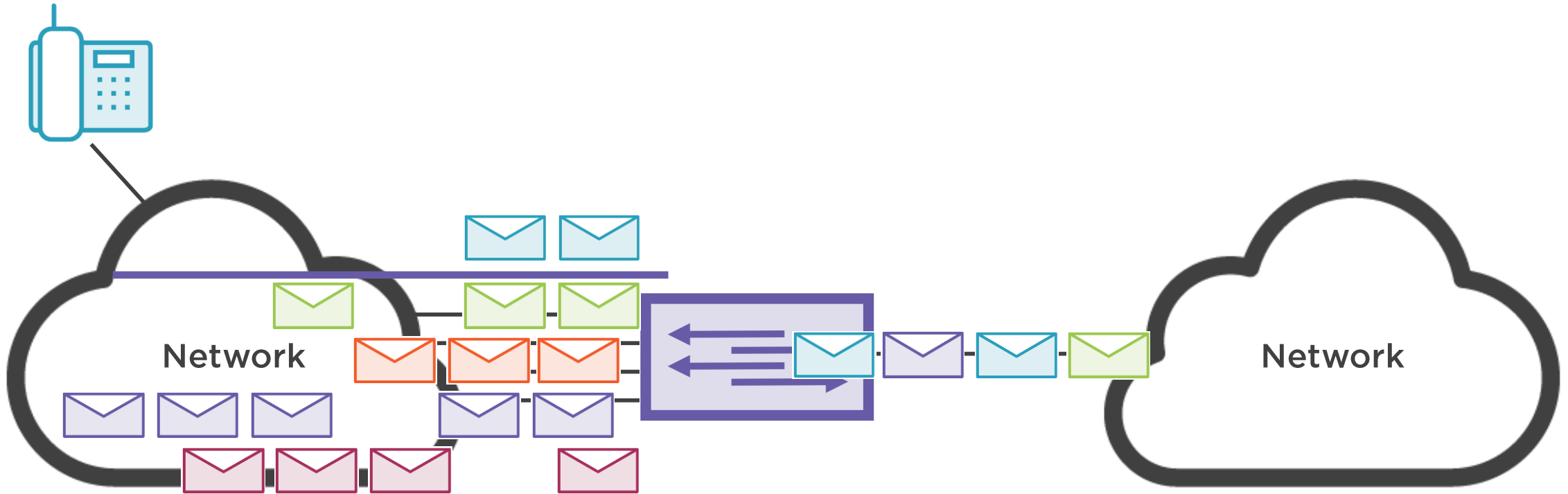
Network Traffic with VoIP



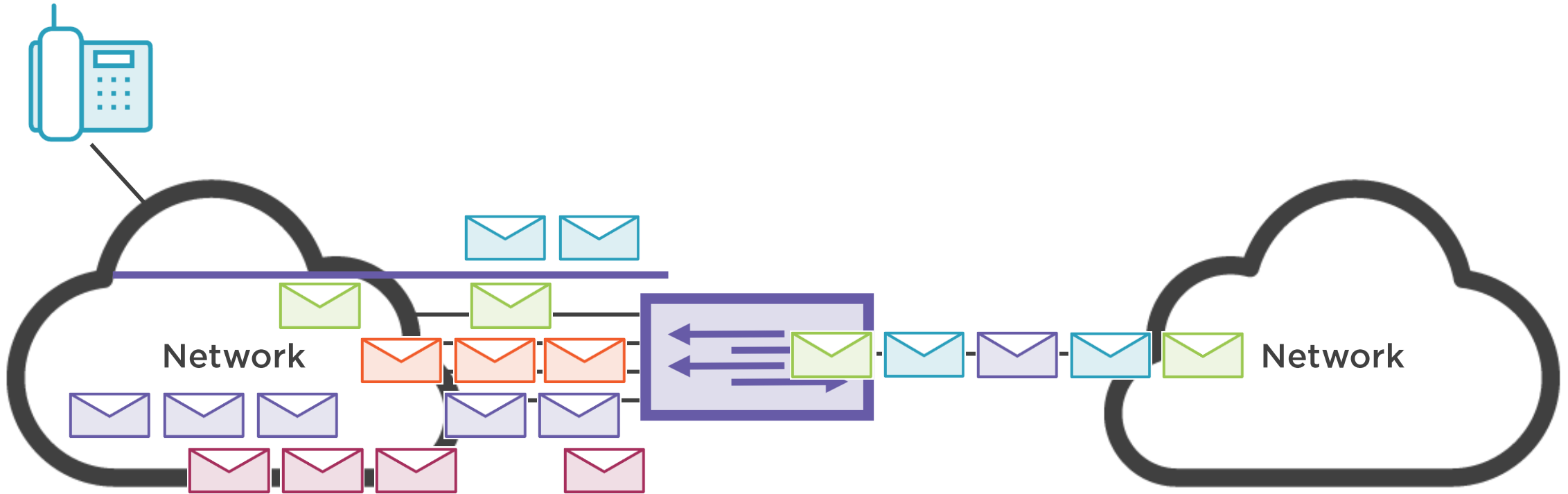
Network Traffic with VoIP



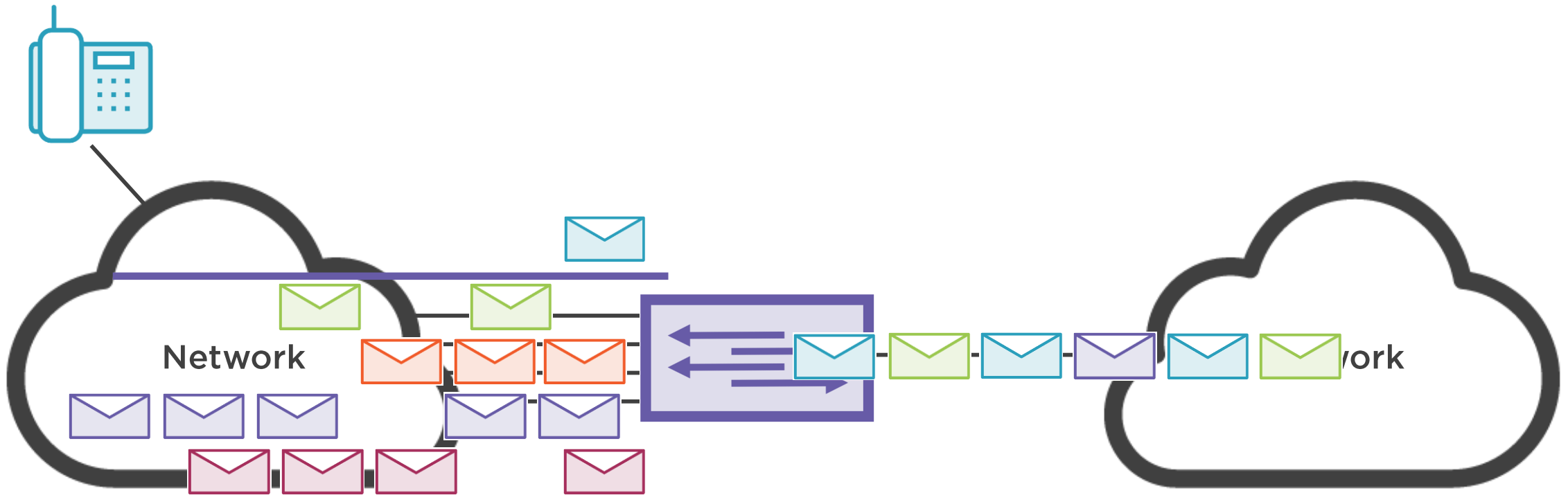
Network Traffic with VoIP



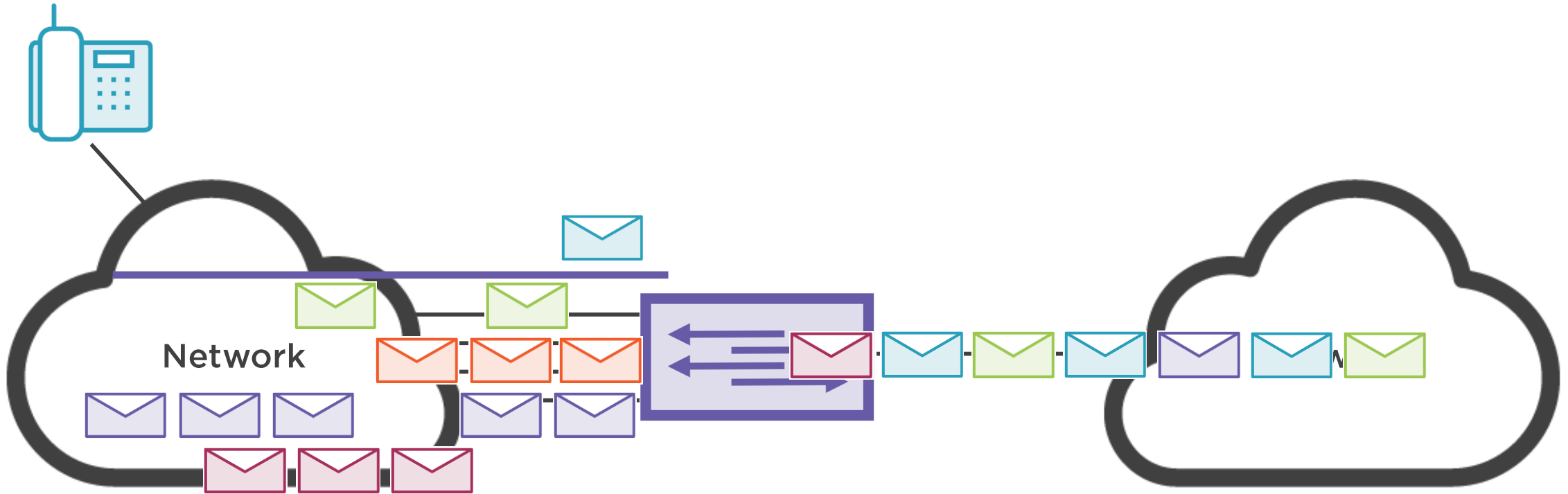
Network Traffic with VoIP



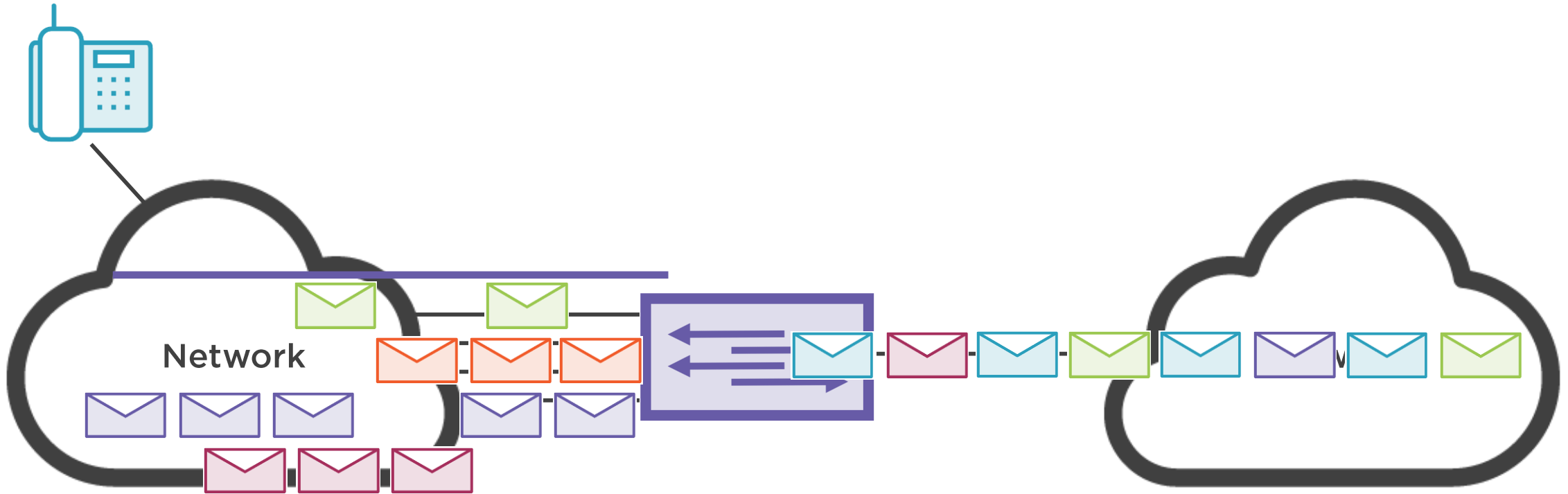
Network Traffic with VoIP



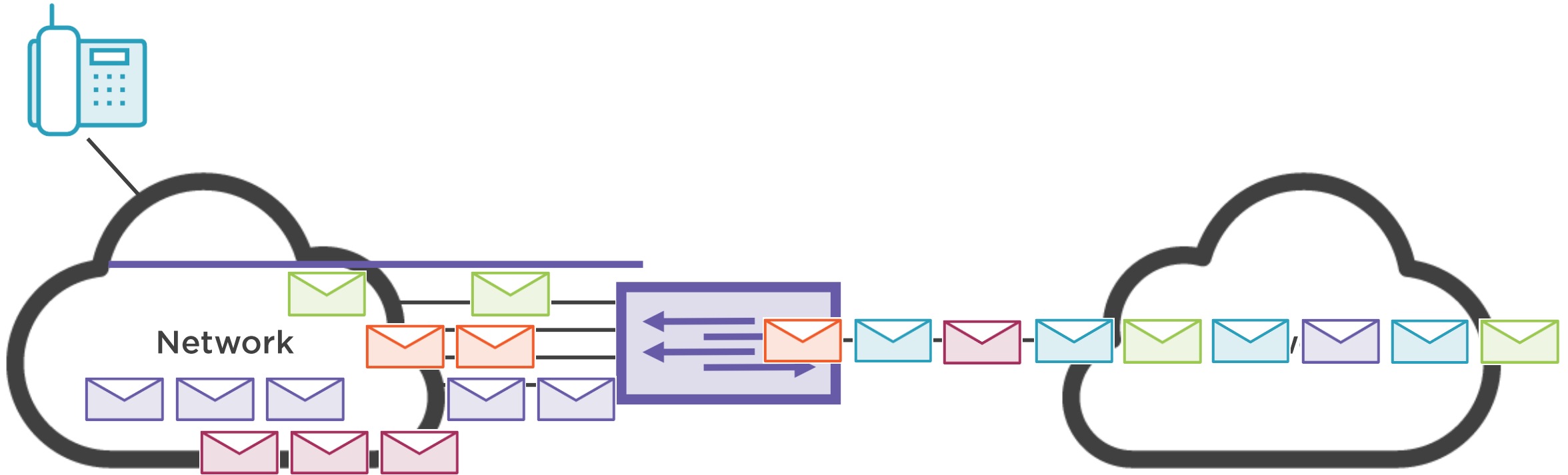
Network Traffic with VoIP



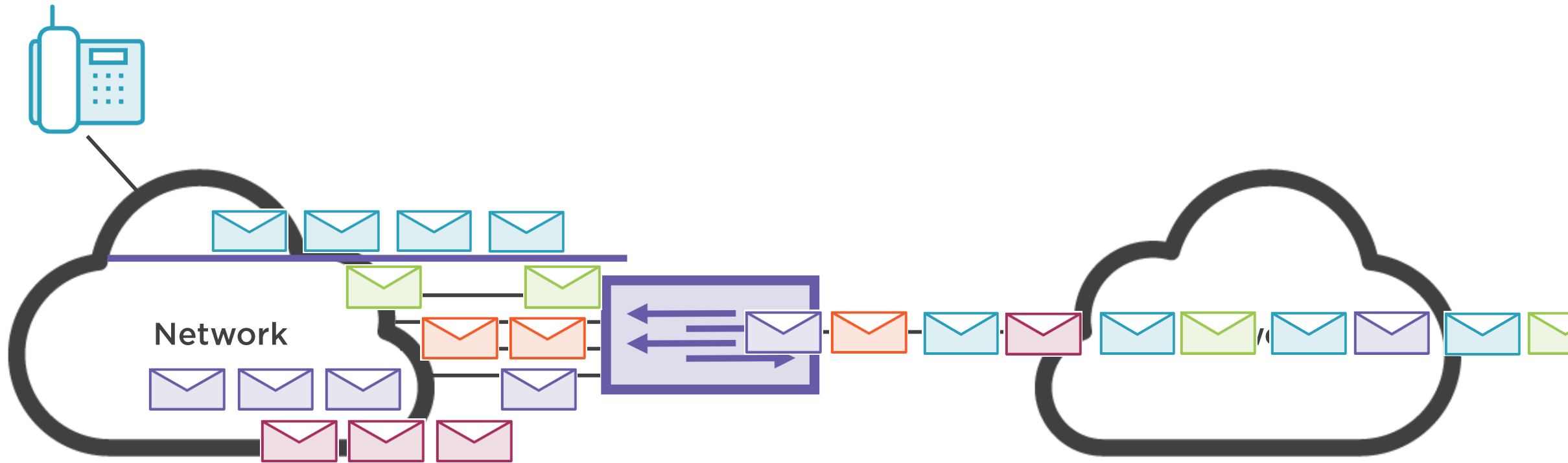
Network Traffic with VoIP



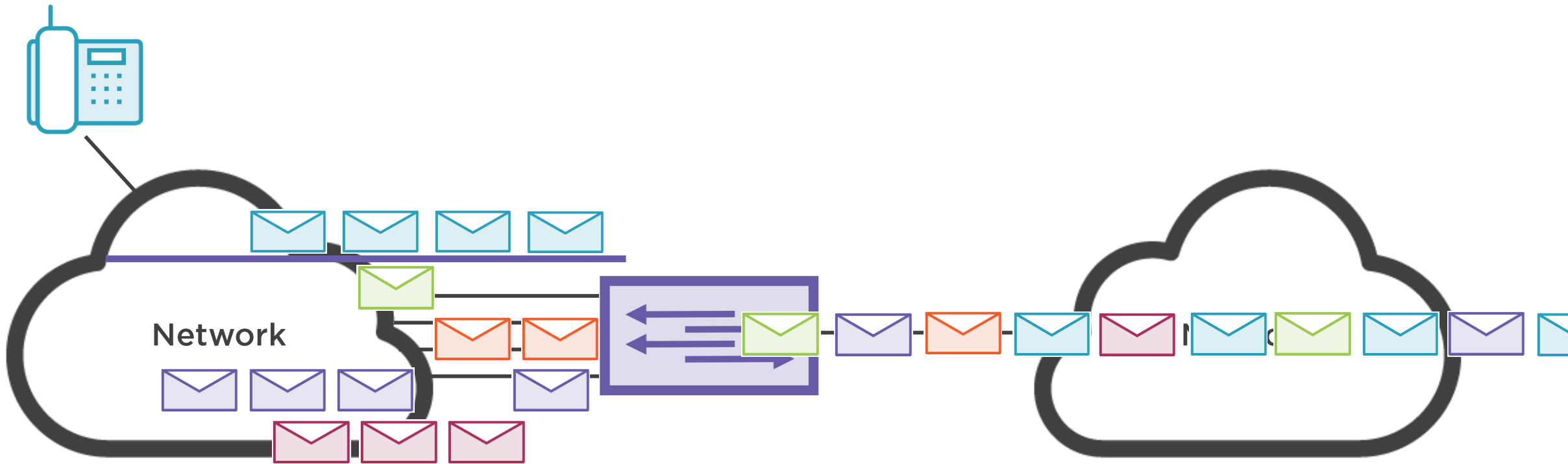
Network Traffic with VoIP



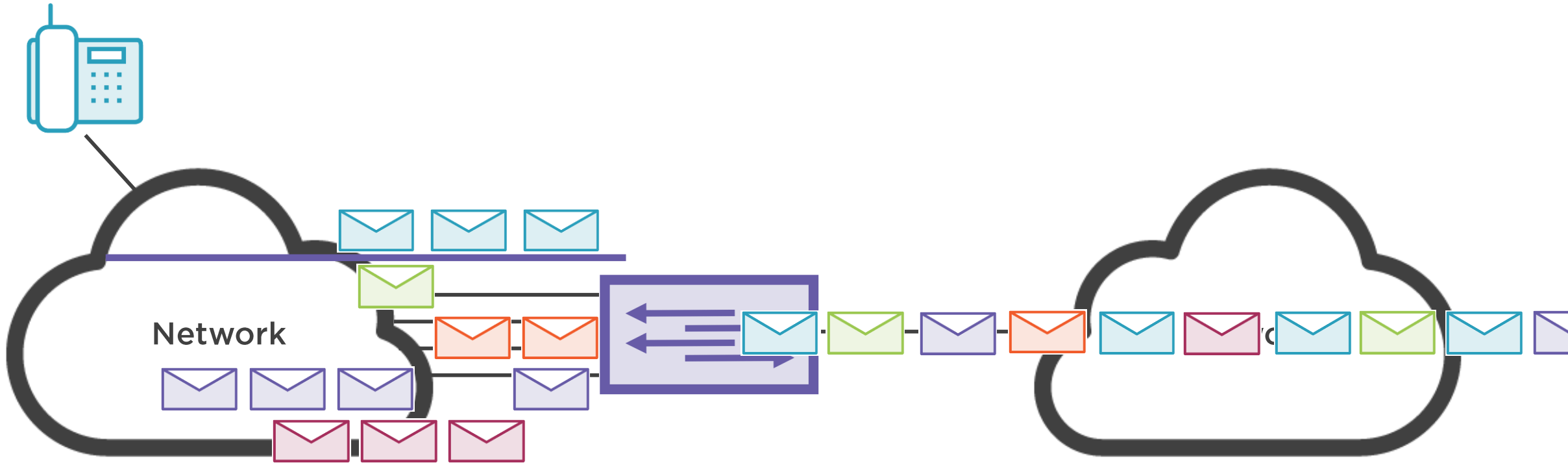
Network Traffic with VoIP



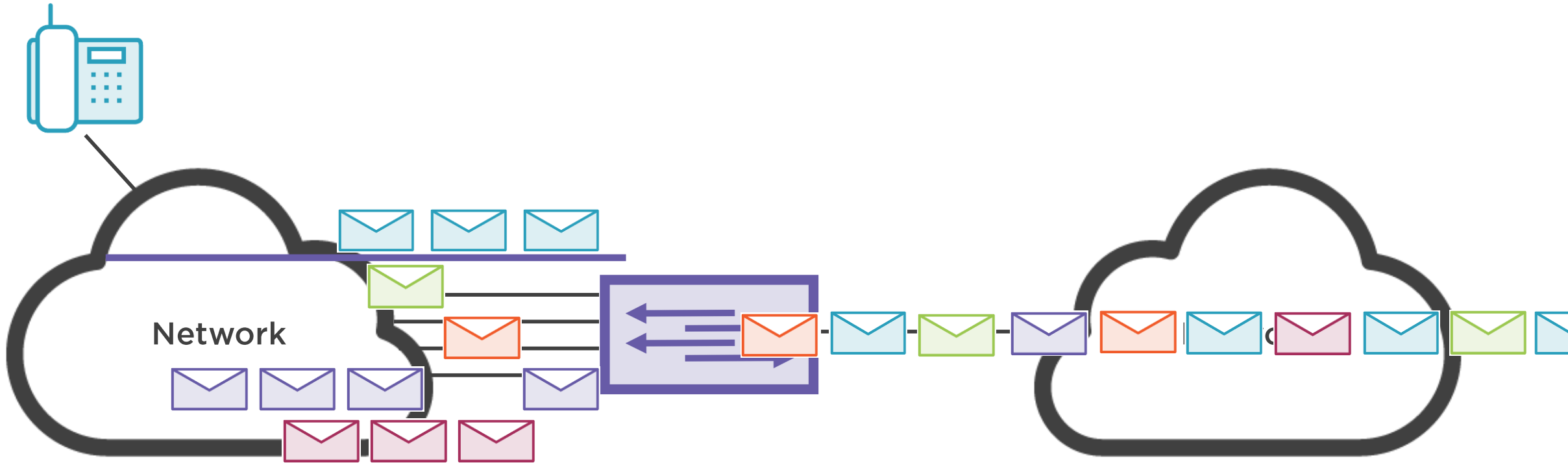
Network Traffic with VoIP



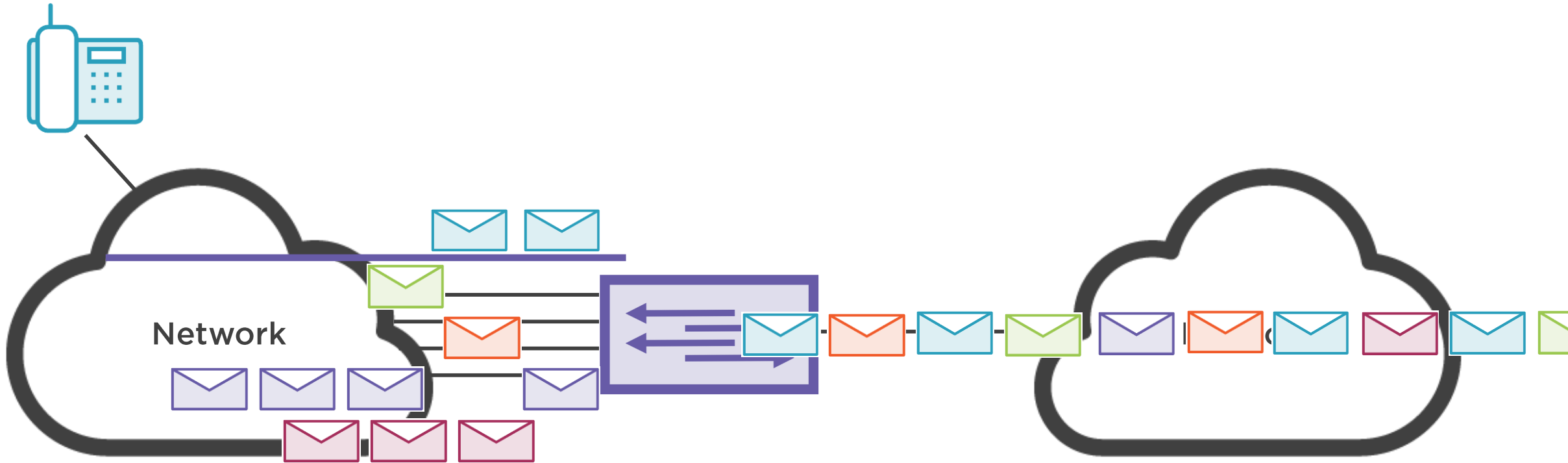
Network Traffic with VoIP



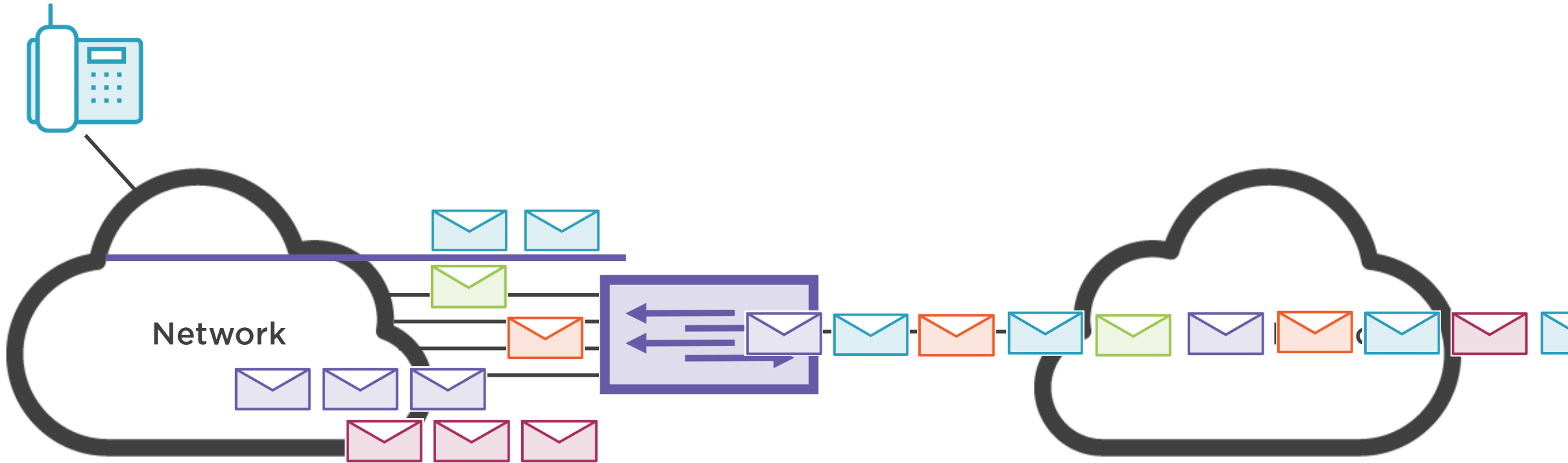
Network Traffic with VoIP



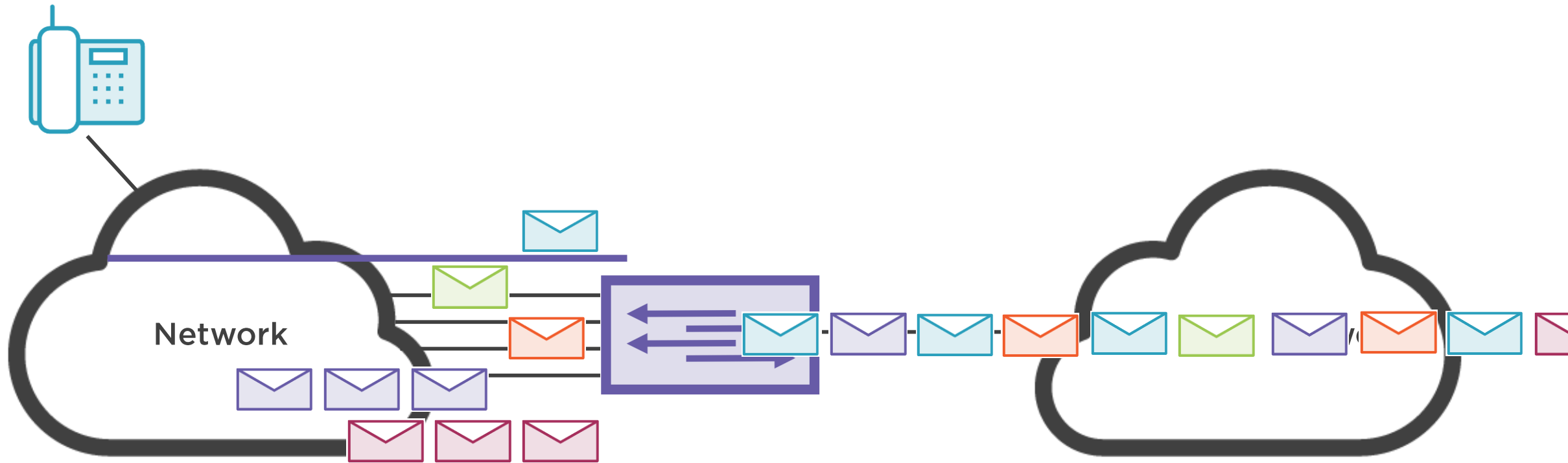
Network Traffic with VoIP



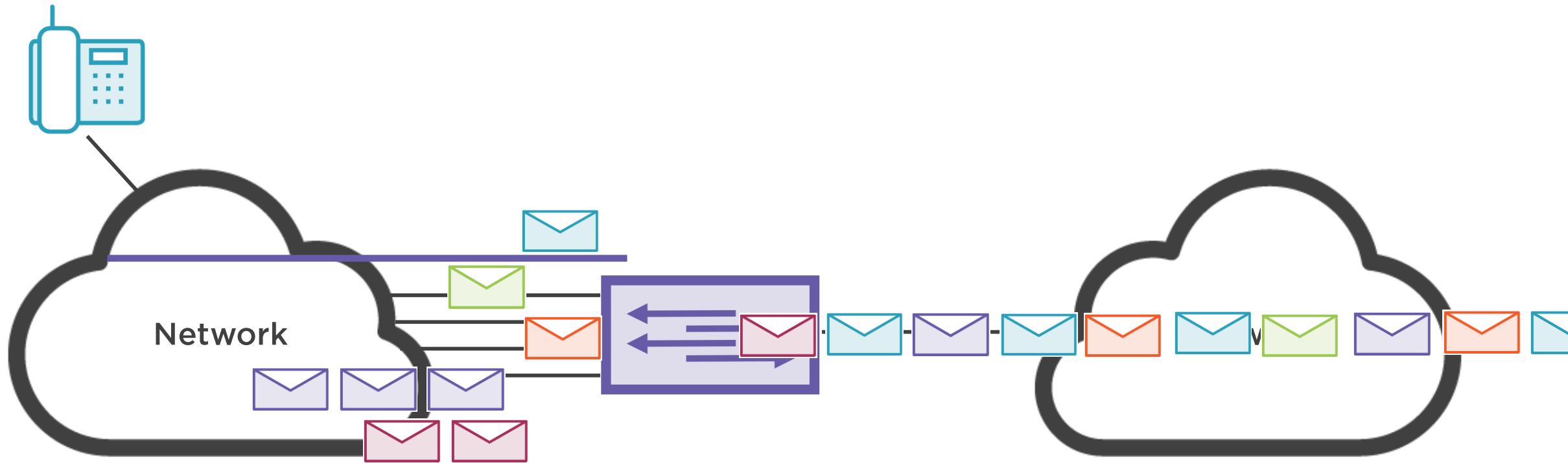
Network Traffic with VoIP



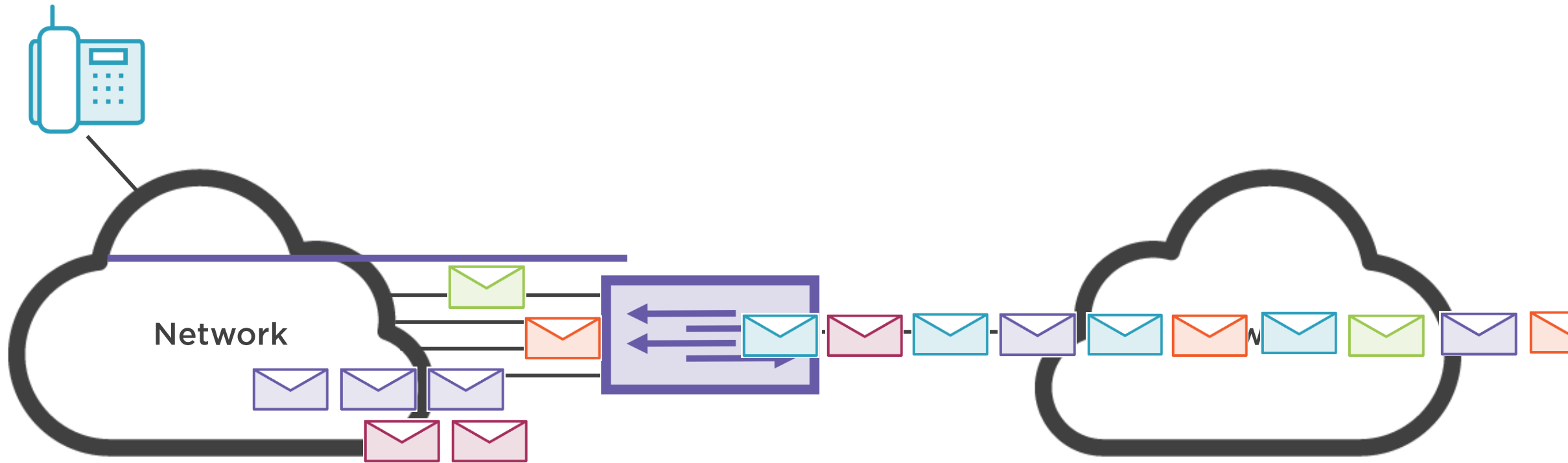
Network Traffic with VoIP



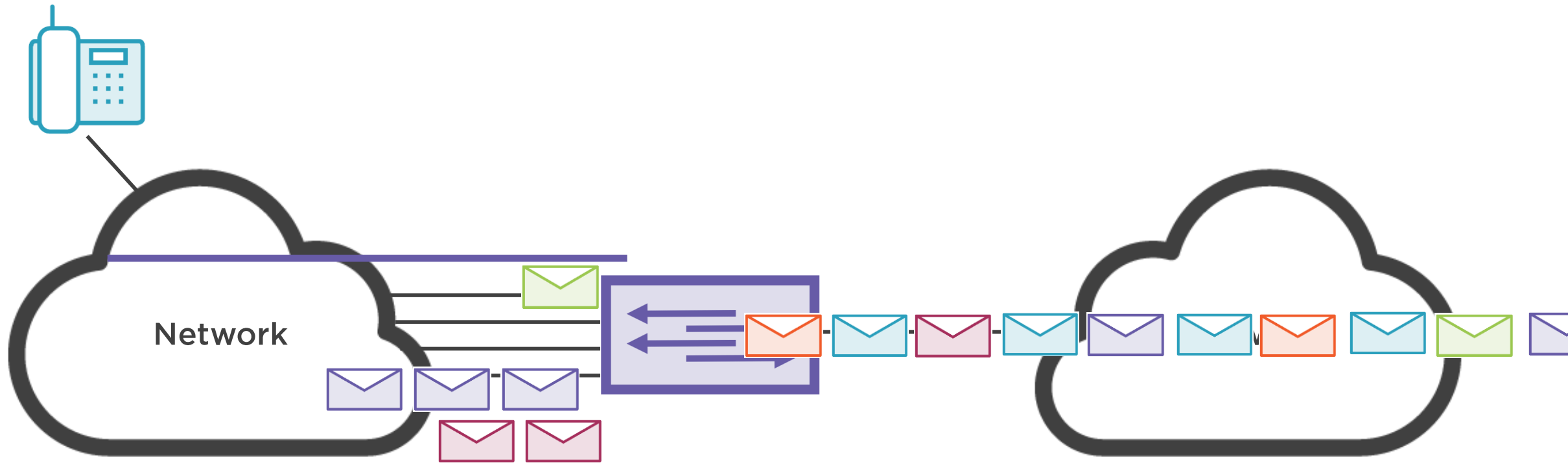
Network Traffic with VoIP



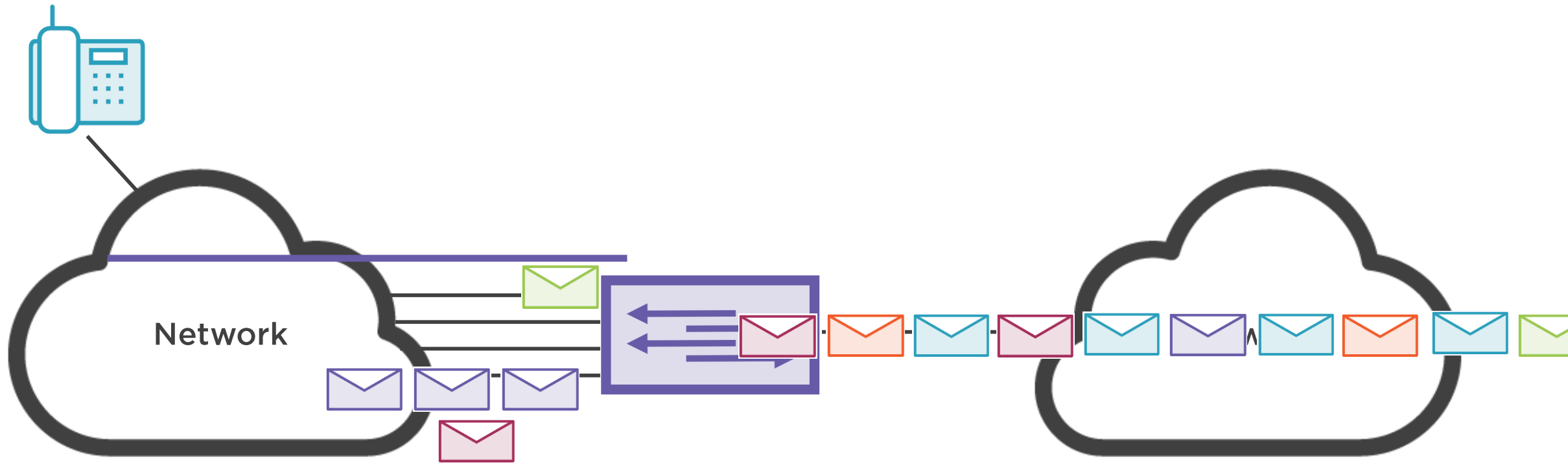
Network Traffic with VoIP



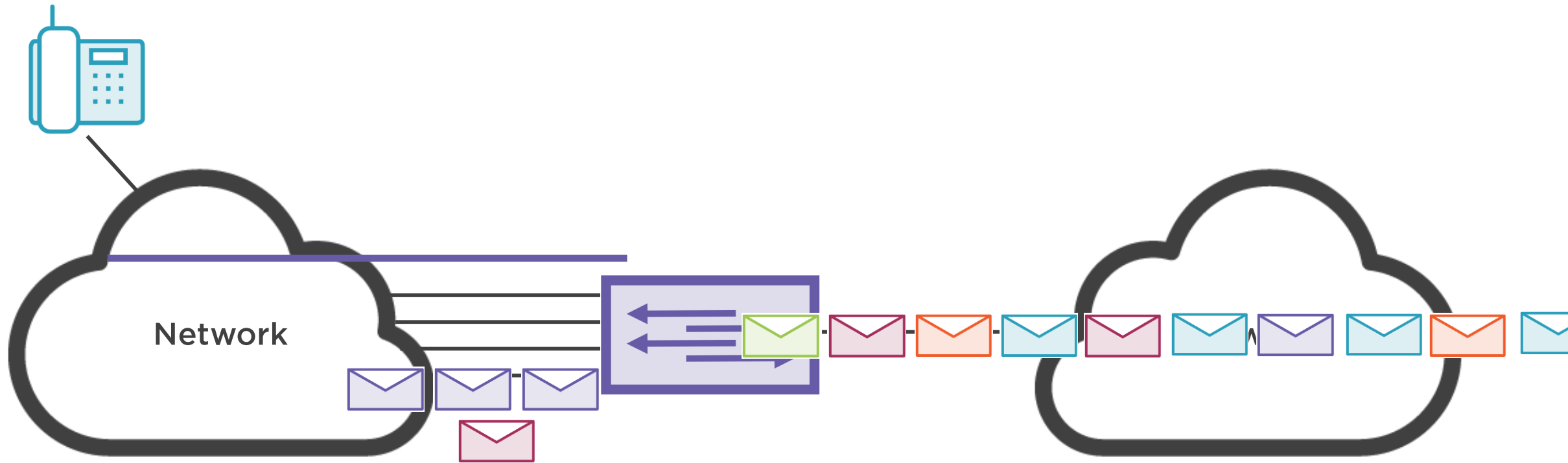
Network Traffic with VoIP



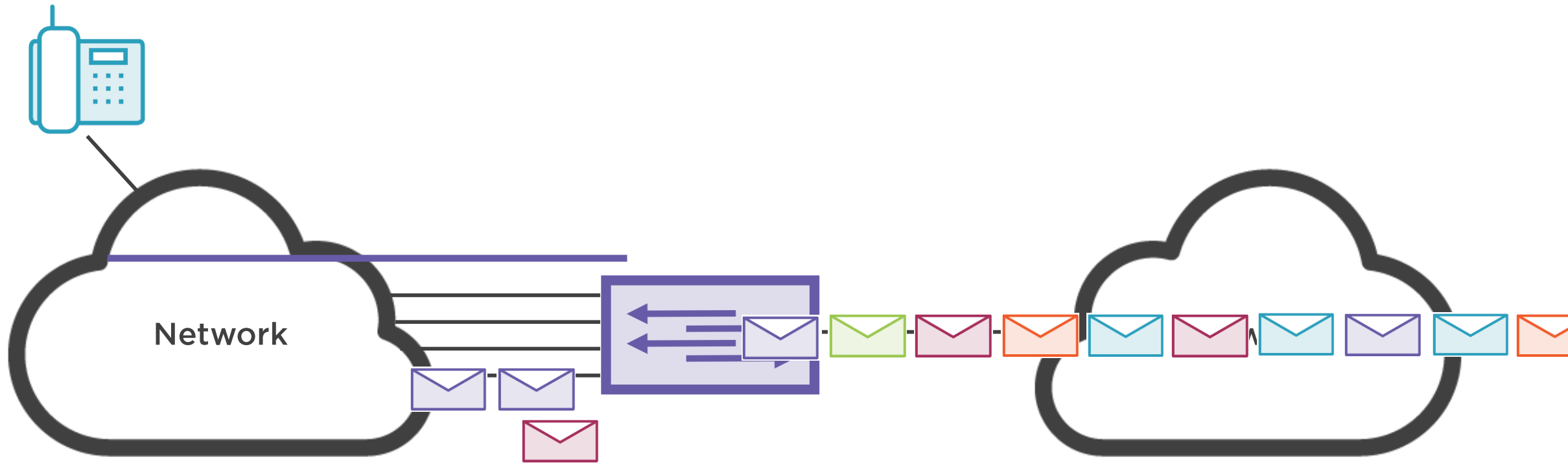
Network Traffic with VoIP



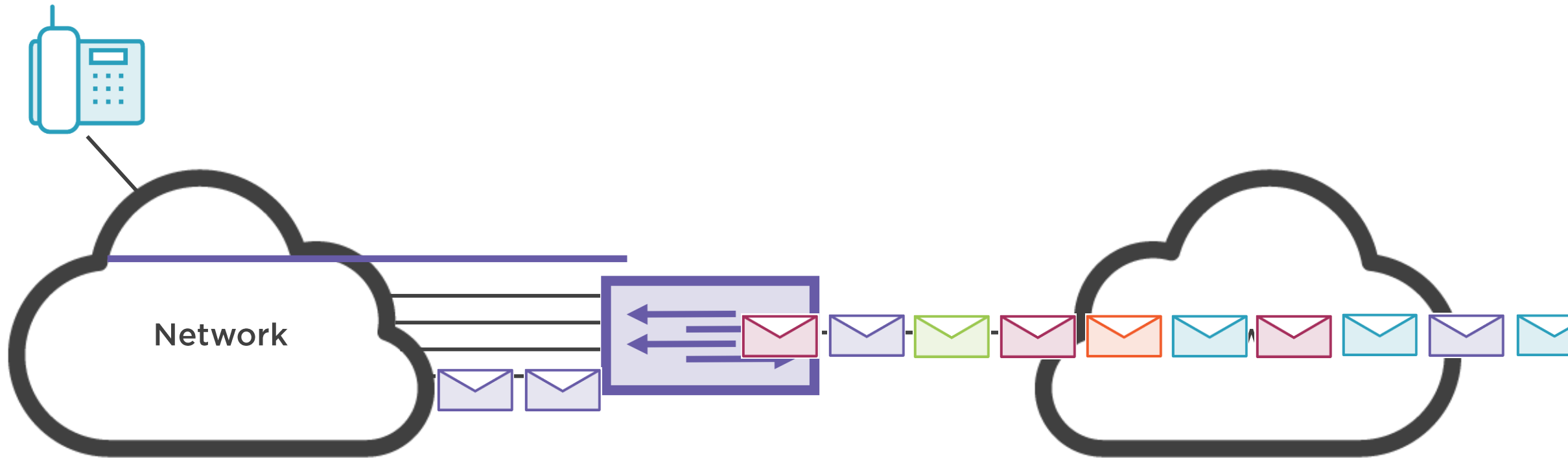
Network Traffic with VoIP



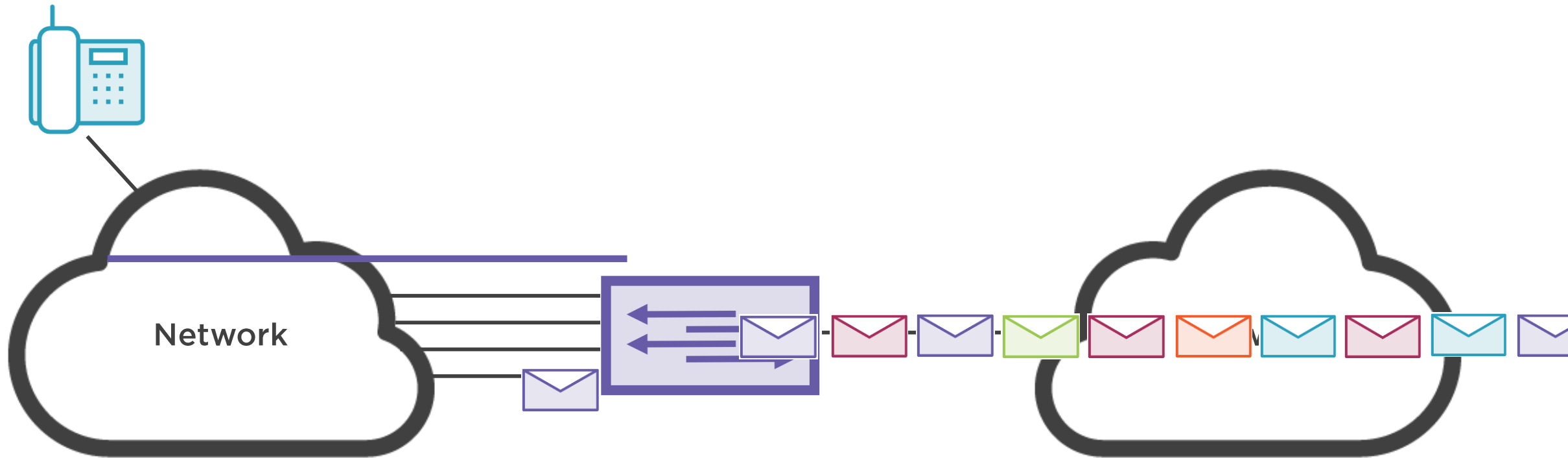
Network Traffic with VoIP



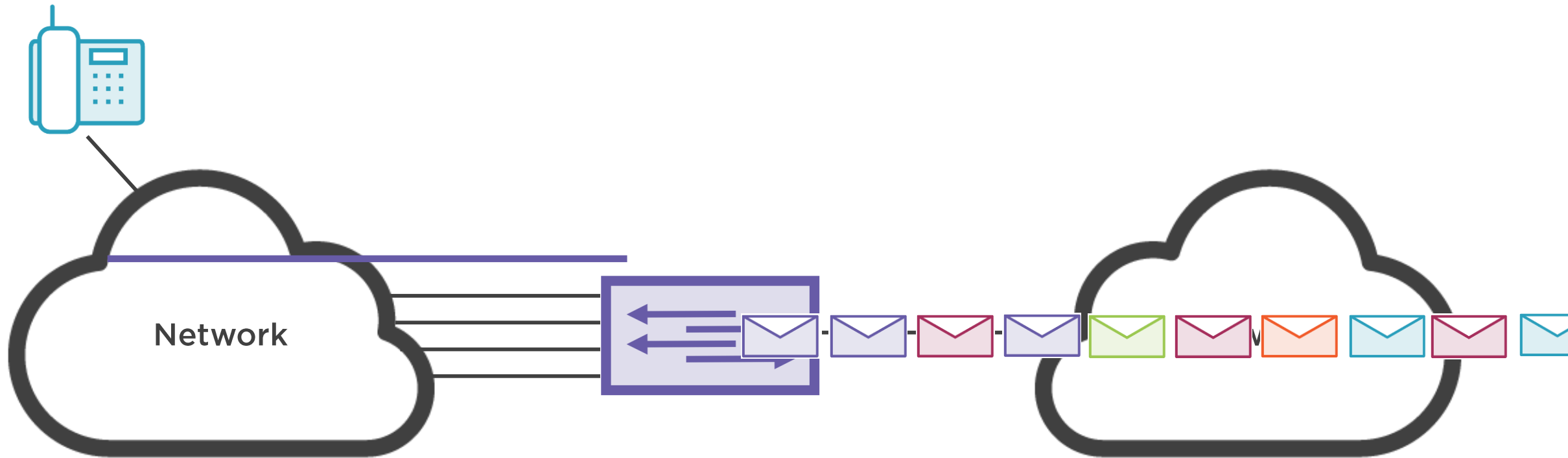
Network Traffic with VoIP



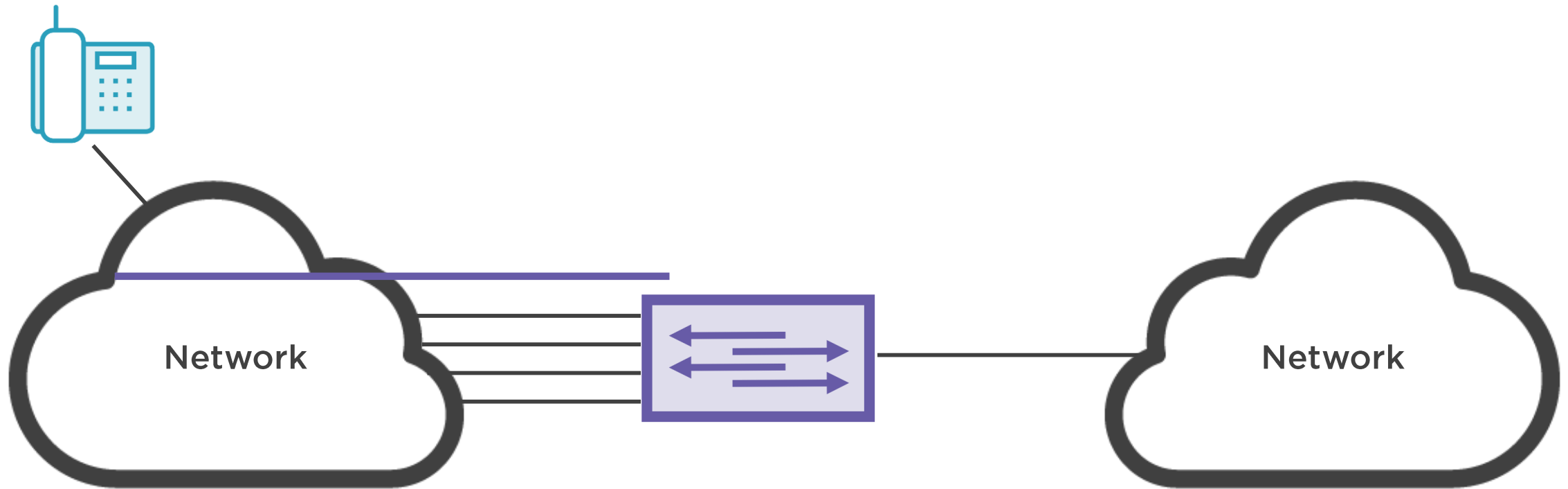
Network Traffic with VoIP



Network Traffic with VoIP



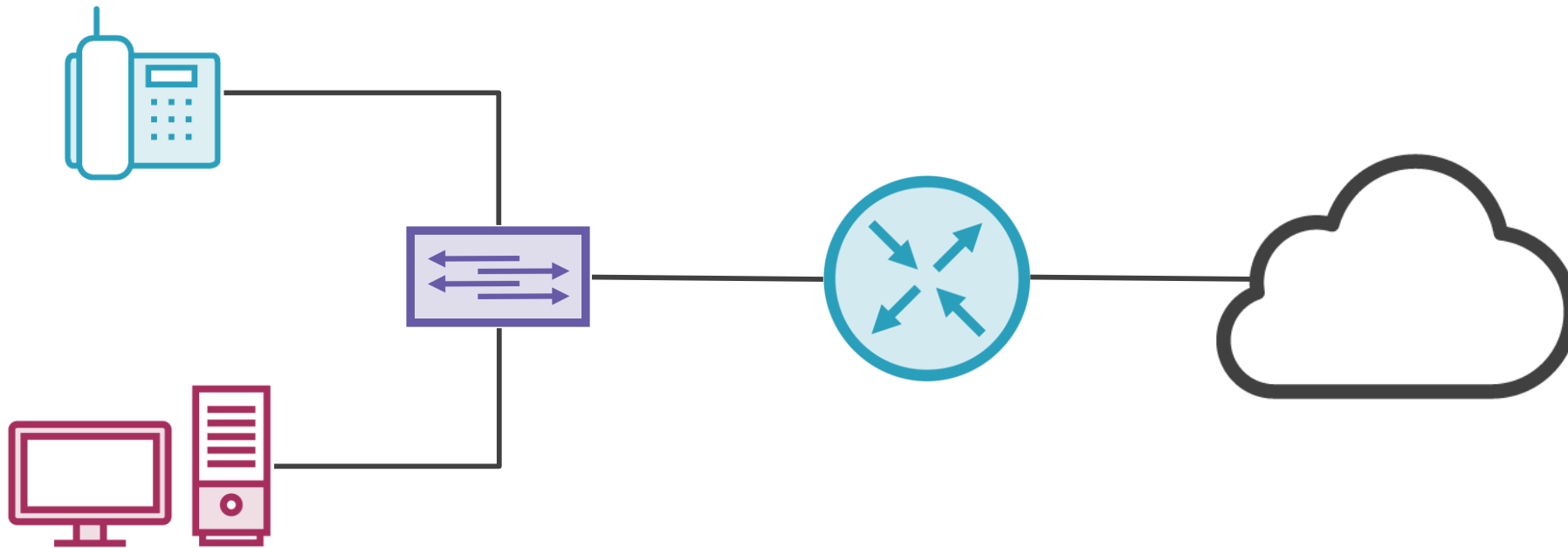
Network Traffic with VoIP



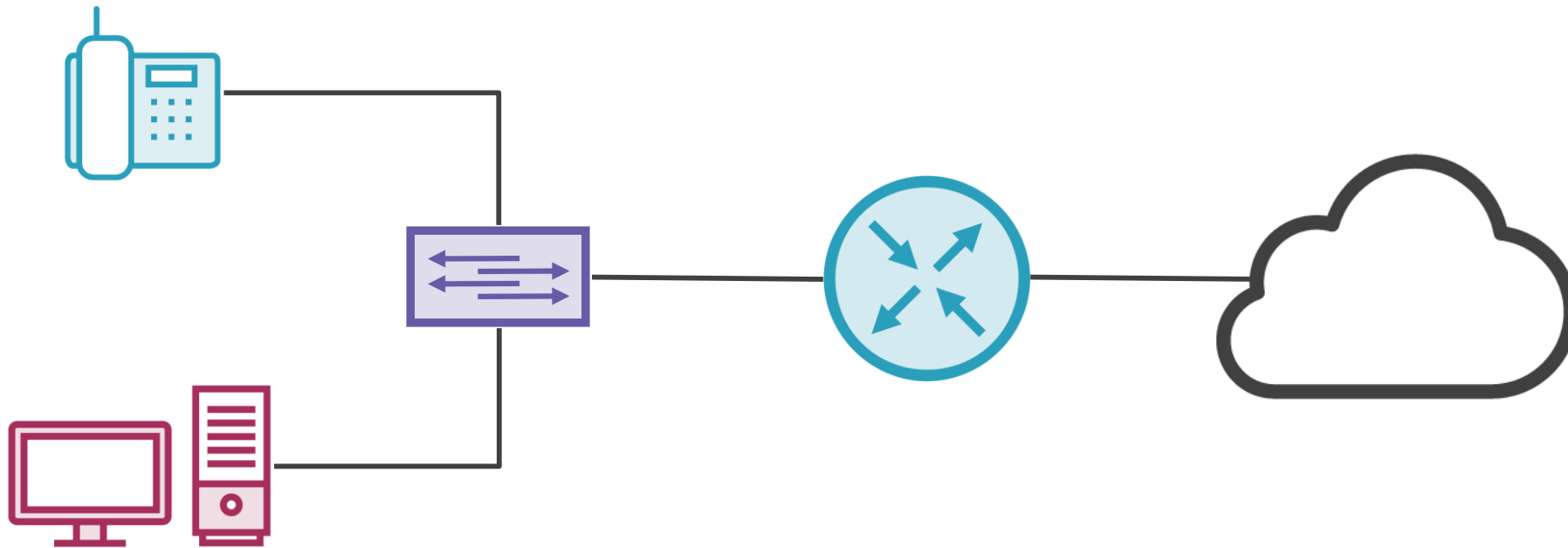
Trust Boundaries



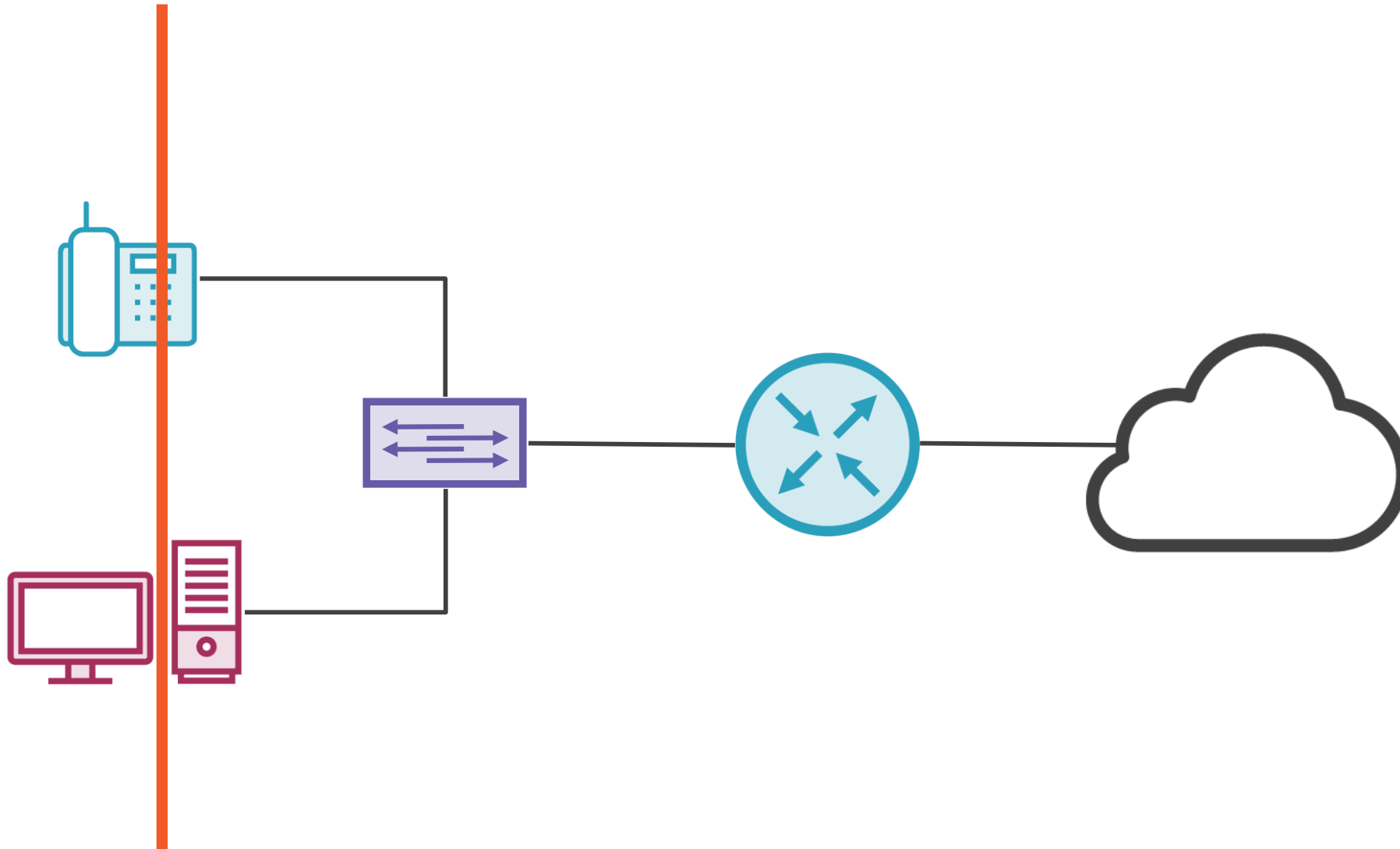
Trust Boundaries



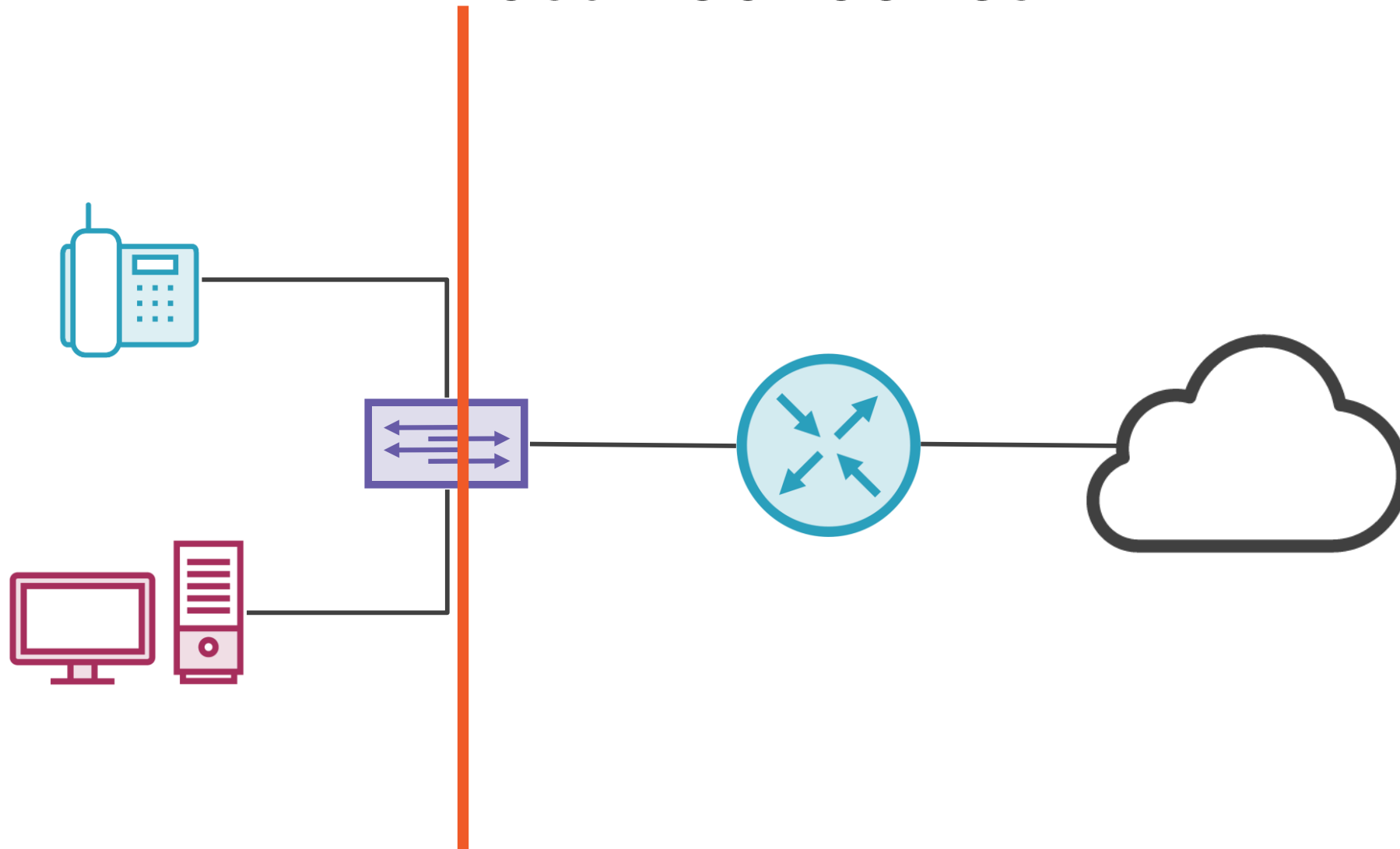
Trust Boundaries



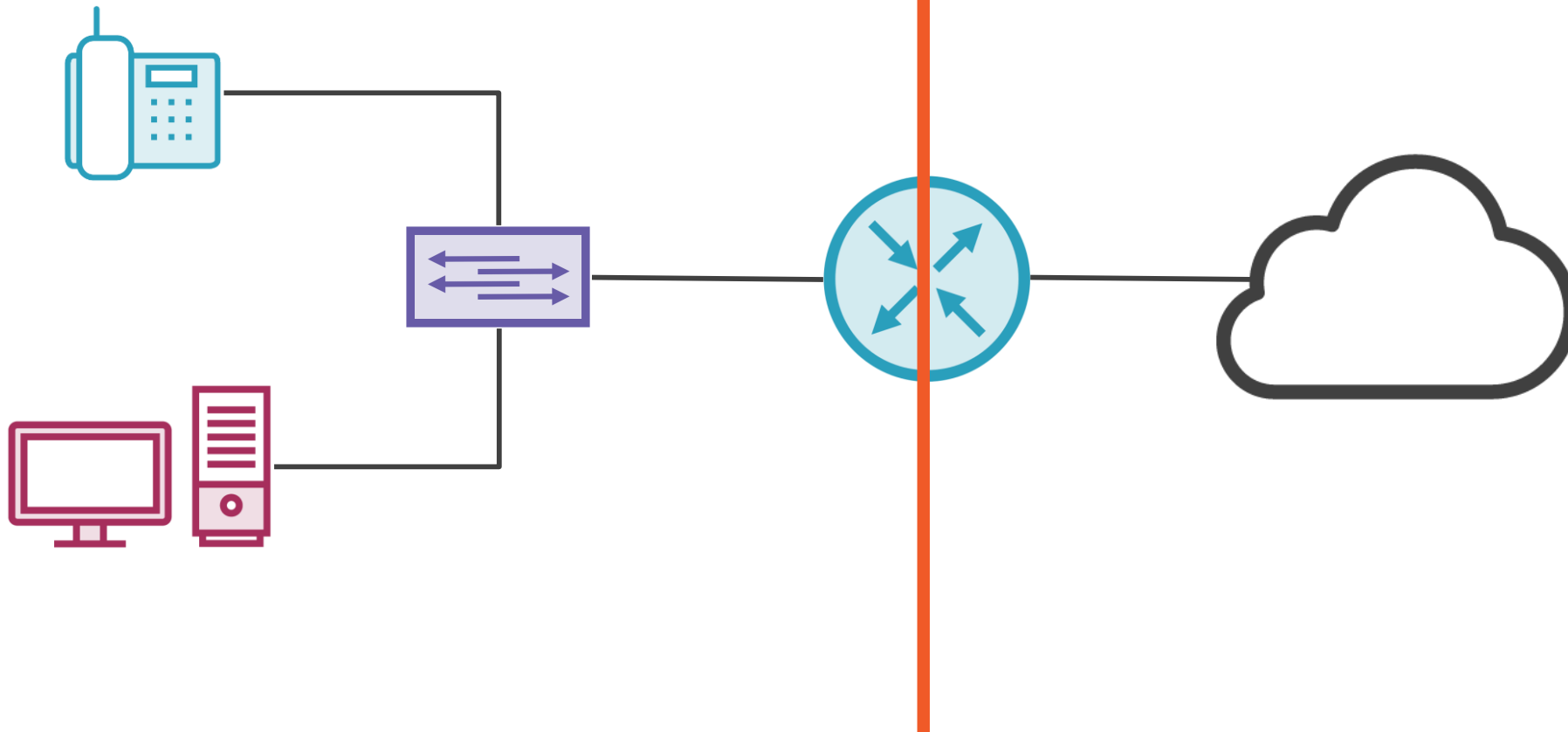
Trust Boundaries



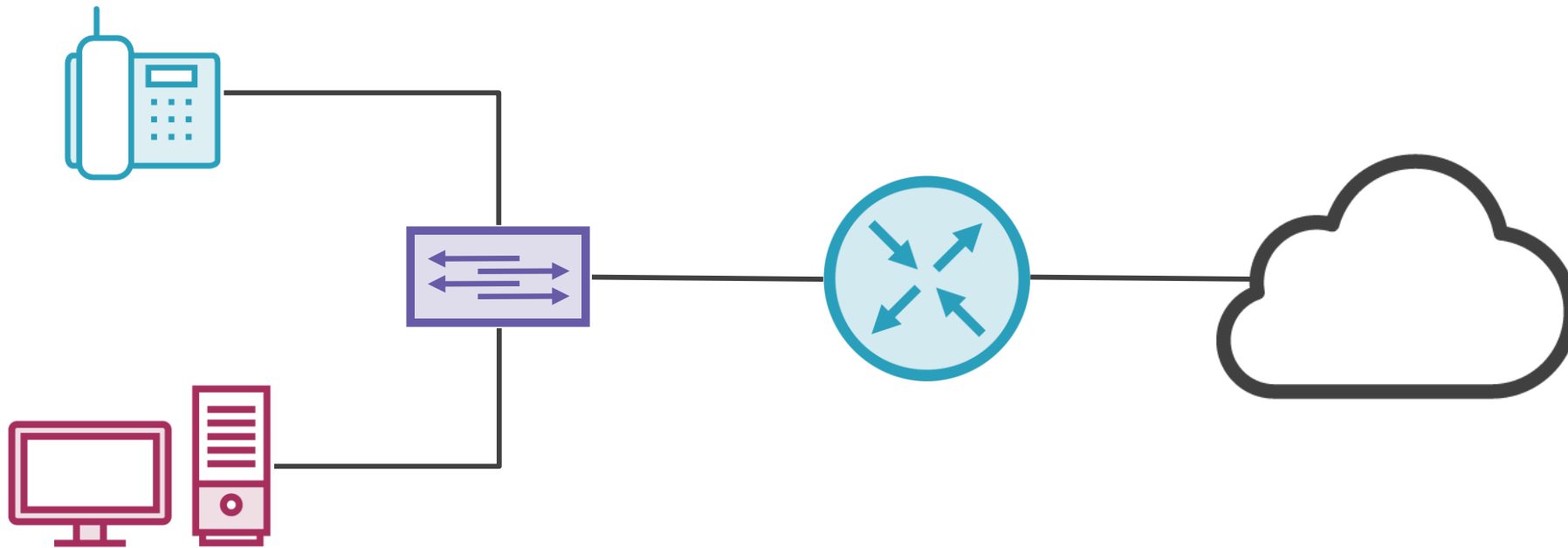
Trust Boundaries



Trust Boundaries



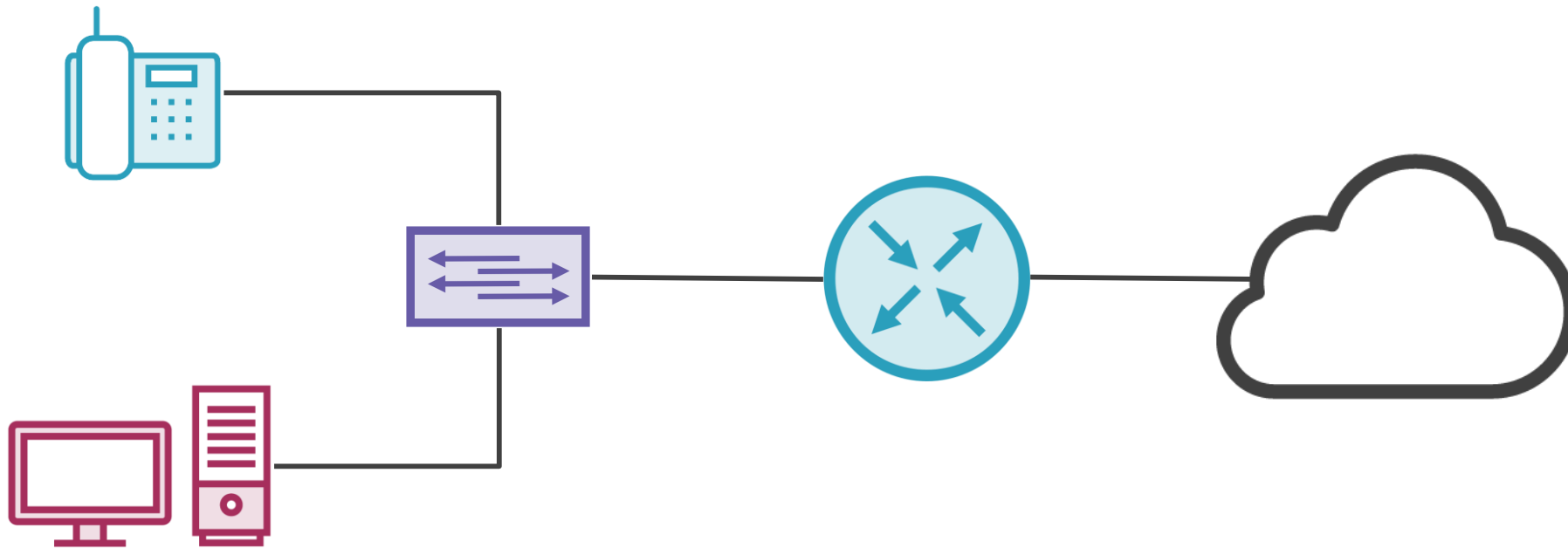
Trust Boundaries



Mark as close to the source as possible



Trust Boundaries



Most applications will add QoS markings automatically

Integrated Services vs. Differentiated Services

IntServ

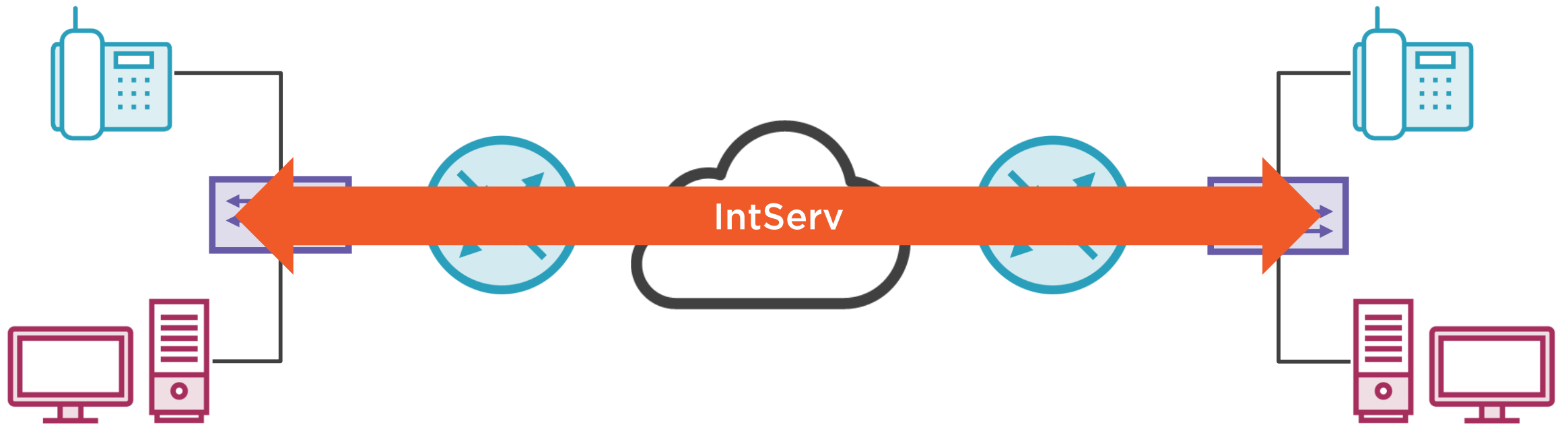
End to End QoS priority

DiffServ

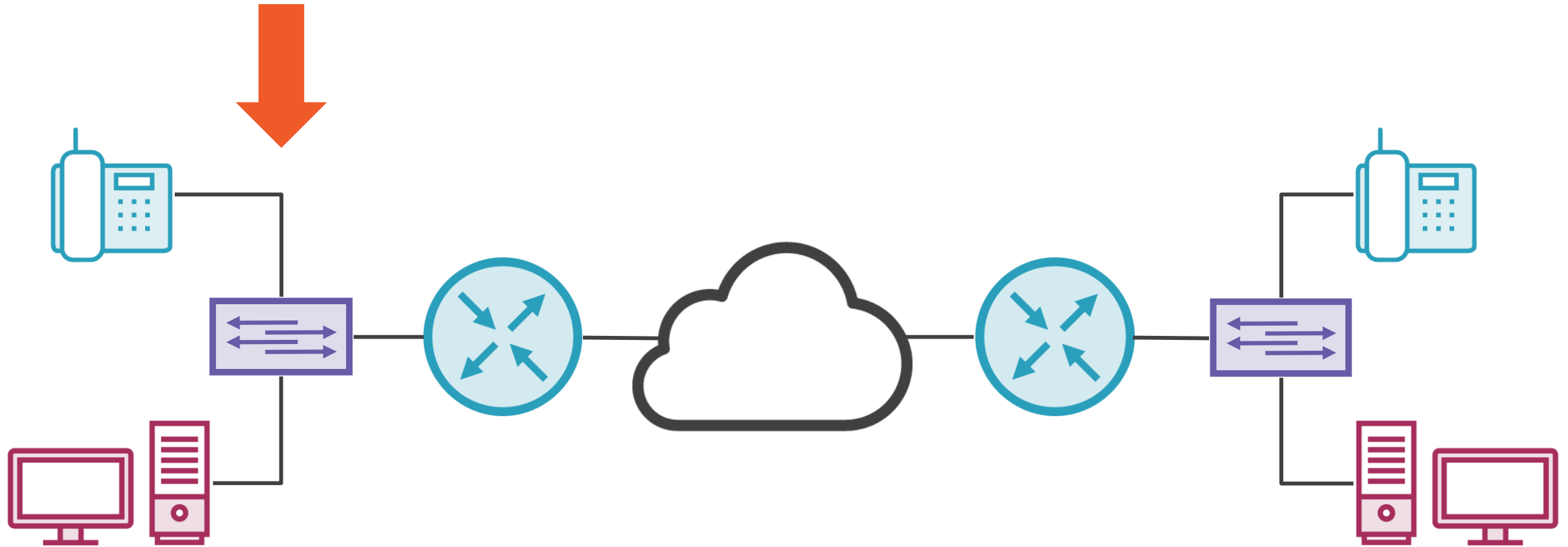
**Priority queuing only applied
per device**



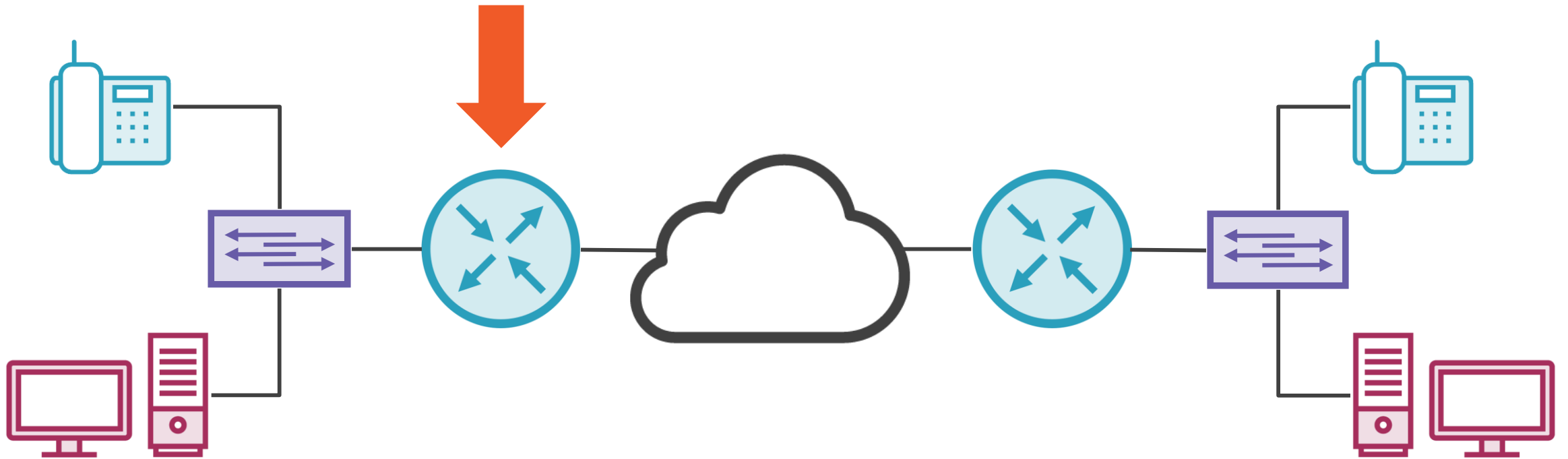
Integrated Services



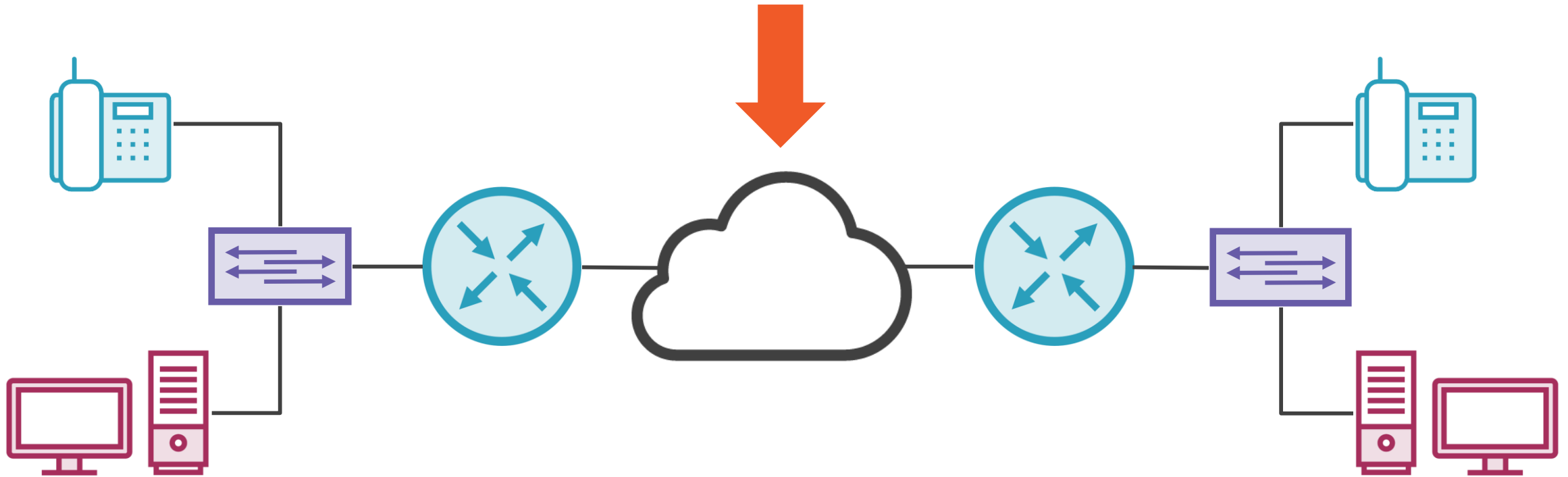
Differentiated Services



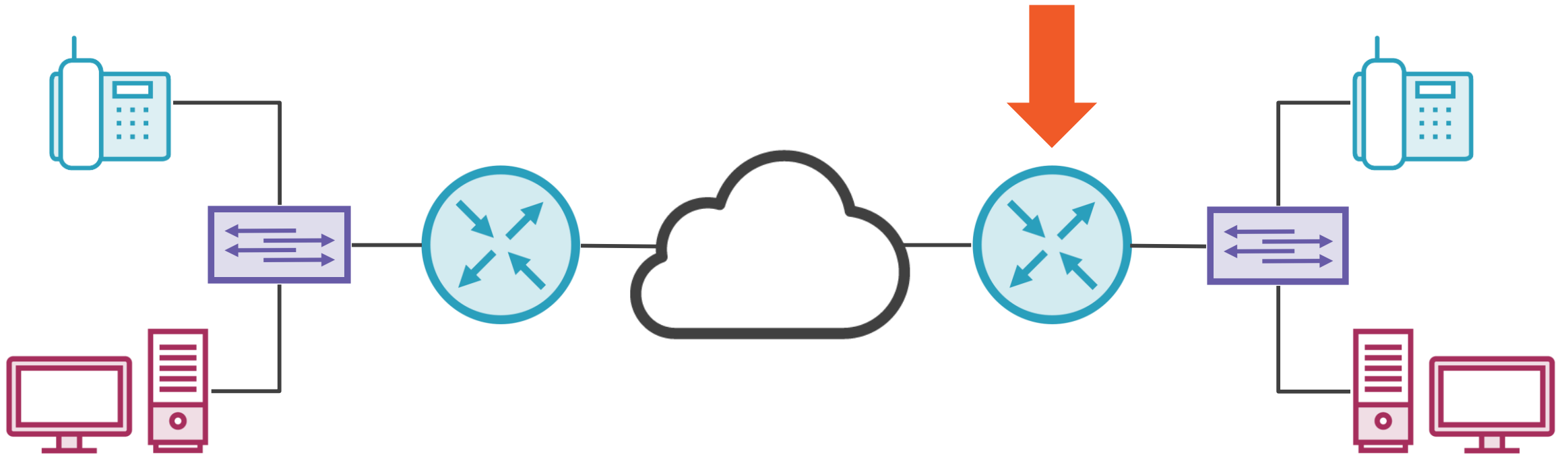
Differentiated Services



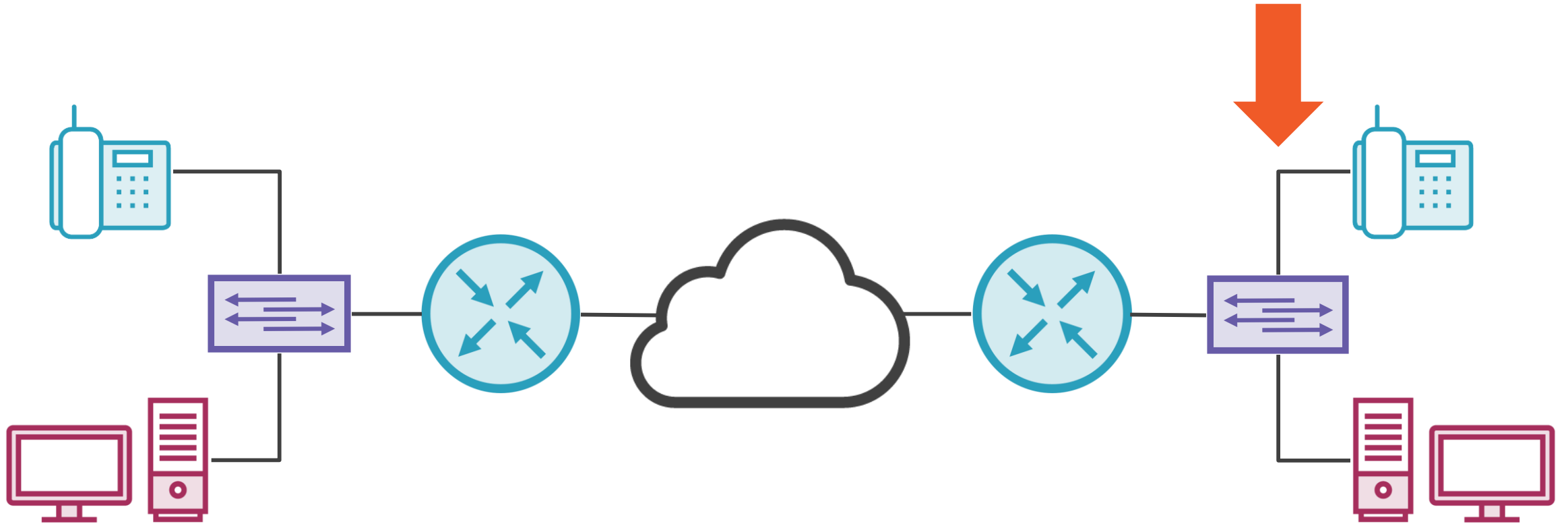
Differentiated Services



Differentiated Services



Differentiated Services



Summary



Describe need for QoS

Explain Queues

Describe QoS operation

IntServ vs. DiffServ

